

citizen Heritage



CitizenHeritage is co-financed by the Erasmus+ Programme of the European Union.
Project number 2020-1-BE02-KA203-074727

Citizen Heritage: introduction & objectives

Roberta Pireddu & Fred Truyen (KU Leuven)
Multiplier Event NTUA - 29 May 2023

Partners



Katholieke Universiteit
Leuven (Coordinator)

KU Leuven

Belgium



National Technical
University of Athens

NTUA

Greece



Erasmus Universiteit
Rotterdam

EUR

Netherlands



Web2Learn

W2L

Greece



European Fashion Heritage
Association

EFHA

Italy



Photoconsortium
International Consortium
for Photographic Heritage

Photoconsortium

Italy

The CitizenHeritage project

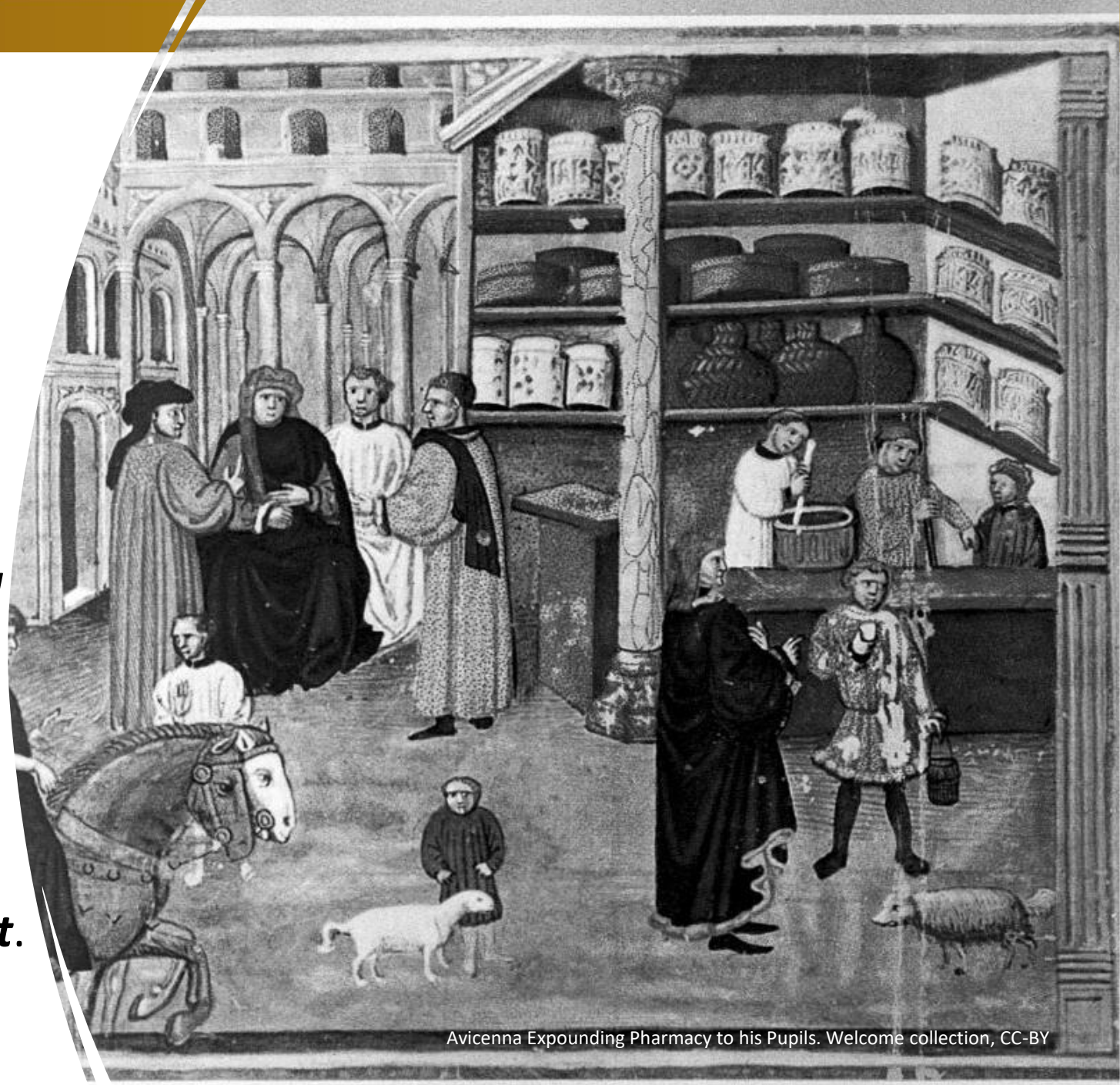
✓ Bring Citizen Science approach to the world of Cultural Heritage.

✓ Provide Higher Education Institutions with new insights and opportunities to include Citizen Science activities for social purposes into Higher Education Institutions teaching and learning activities.

✓ Provide selection of good practices on how to benefit from the knowledge circulation in and outside academia and how to adopt a more vibrant role in civil society.

Engaging citizens in education and cultural heritage curation

- *Cultural Heritage Institutions are constantly looking for new ways to involve citizens in their activities.*
- *Attention on the use of technological innovations for supporting and enhancing Citizen Science participation.*
- *We investigate what needs to be added to **move from crowdsourcing to active citizen science engagement.***



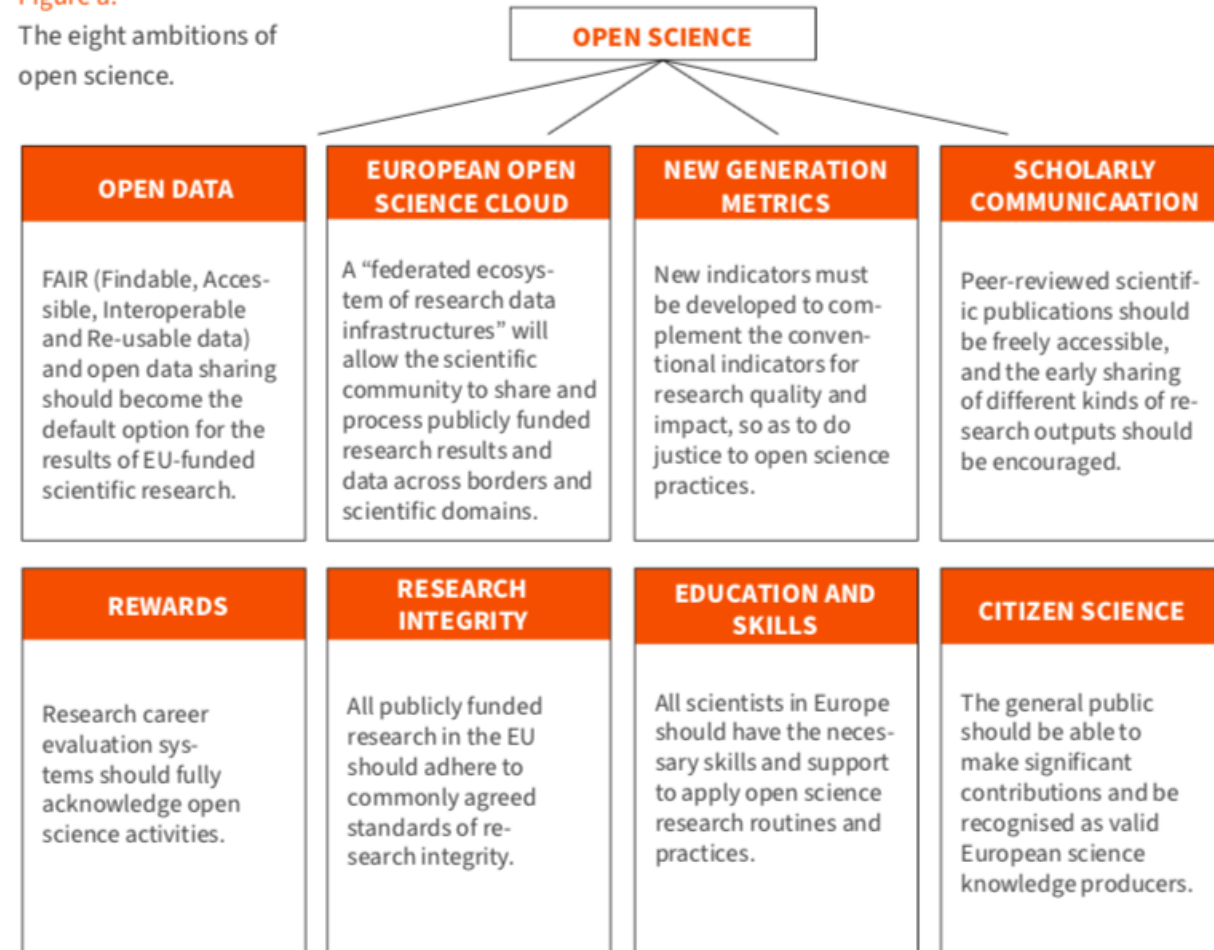
Avicenna Expounding Pharmacy to his Pupils. Welcome collection, CC-BY

Citizen Science: setting the standards

- *Public participation in scientific research:*
- *“actively **involve** the public directly in the **multifaceted and iterative processes** of scientific investigation. Such efforts include citizen science, volunteer monitoring, and participatory action research. Projects that fall into these categories allow participants to **learn both science content and process while experiencing the fun and excitement of research.**” (Bonney, et al., 2009, p. 10).*

Figure a.

The eight ambitions of open science.



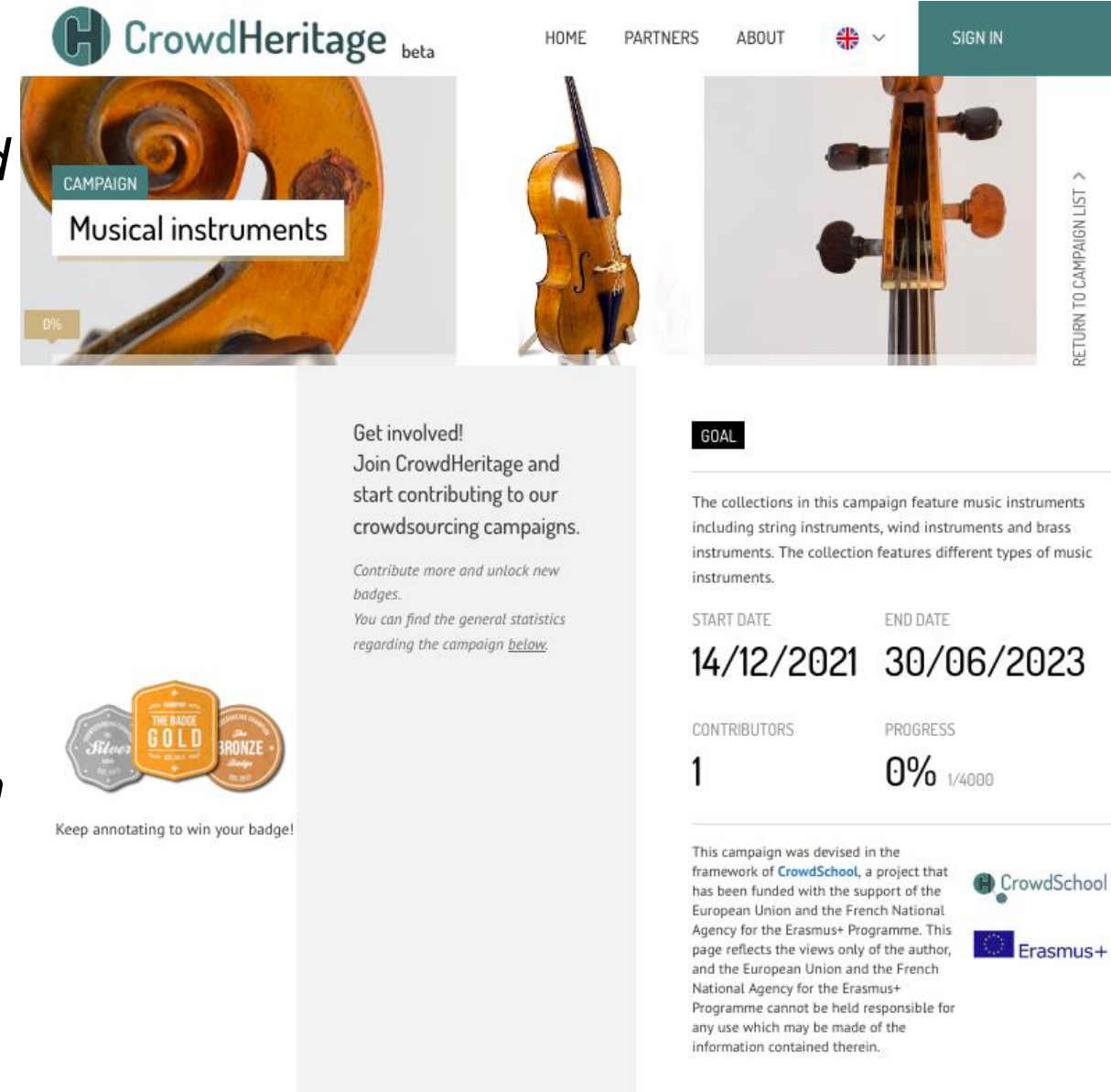
From crowdsourcing to citizen science...

- ✓ Take user's contributions seriously
- ✓ Make these contributions traceable
- ✓ Give due credits
- ✓ Respect privacy and authorship
- ✓ Provide an ethics and deontology framework
- ✓ Manage discord, conflict and divergent opinion



Collaboration with the Cultural Heritage sector

- *Citizen-enhanced open science:*
- *The project engages with stakeholders and professionals in the digital cultural heritage domain, establishing collaboration for knowledge sharing and co-curation between academics and stakeholders.*
- *We want to see how:*
 - *Citizen engagement in the Cultural Heritage institutions can link directly into scientific publications*
 - *Higher Education institutions can play a role in supporting Citizen research in Cultural Heritage*



The screenshot shows the CrowdHeritage website interface. At the top, there is a navigation bar with 'HOME', 'PARTNERS', 'ABOUT', a language dropdown (set to UK), and a 'SIGN IN' button. The main content area features a campaign titled 'Musical instruments' with a progress indicator at 0%. Below this, there is a call to action: 'Get involved! Join CrowdHeritage and start contributing to our crowdsourcing campaigns. Contribute more and unlock new badges. You can find the general statistics regarding the campaign [below](#).' To the right, a 'GOAL' section displays the campaign dates from 14/12/2021 to 30/06/2023, and shows 1 contributor and 0% progress (1/4000). At the bottom, there are logos for CrowdSchool and Erasmus+, along with a disclaimer: 'This campaign was devised in the framework of CrowdSchool, a project that has been funded with the support of the European Union and the French National Agency for the Erasmus+ Programme. This page reflects the views only of the author, and the European Union and the French National Agency for the Erasmus+ Programme cannot be held responsible for any use which may be made of the information contained therein.'

Place of Higher Education

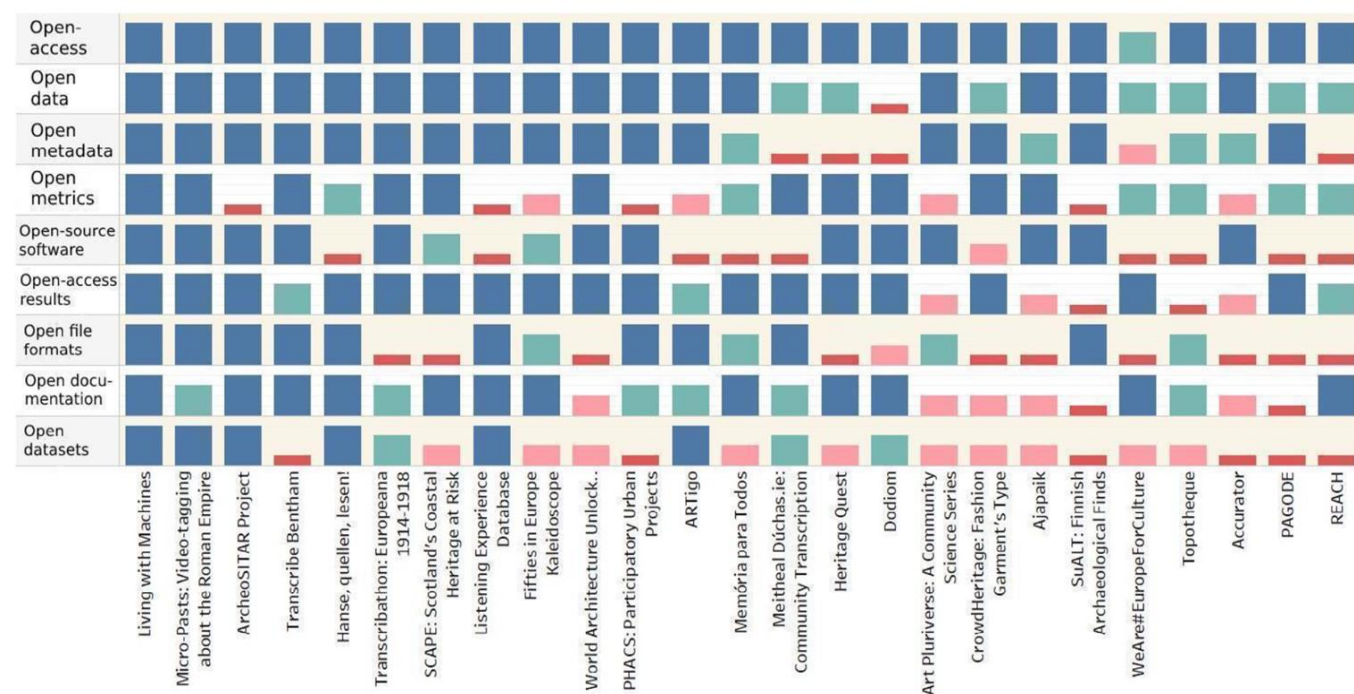
- Preparing the next generation of Heritage professionals
 - Offering training in Citizen Science Methodology
 - Freedom of experimentation
- Rethinking of the Heritage concept
 - More attention to intangible heritage and cultural practices as the basis of heritage
 - Better integration of natural and human heritage – the ecological dimension
 - Thinking beyond the institution
 - Reaching out to heritage communities
 - Taking diversity on board
 - Tackling mis- and underrepresentation issues

Activities in the project

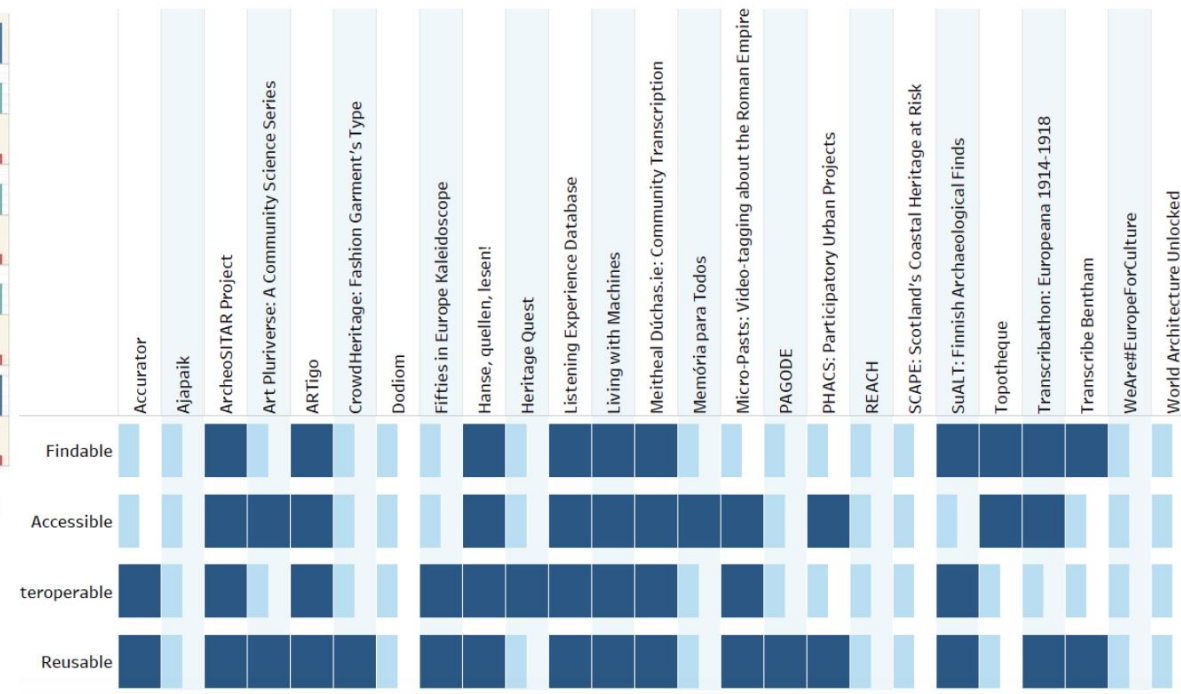
- Review of practices of Higher Education engagement in citizen enhanced open science in the area of cultural heritage
- A methodology, user requirements and guidelines for Cultural Heritage Institutions and universities
- Development and testing of participatory approaches
- Lessons learnt about the role of digital technologies in facilitating crowd science in cultural heritage and education
- Economic and social sustainability of citizen enhanced open heritage projects

Evidence of limitations in current practices

Report available at <https://www.citizenheritage.eu/results/>



Assessment of the openness scope against the 9-factor typology taking four values, “good” (blue), “partly good” (green), “not clear” (pink), “weak” (red). In Zourou & Ziku, 2022. CC BY 4.0



Assessment of the FAIR dimension taking two values, “yes” (dark blue), “no/not clear” (light blue). In Zourou & Ziku, 2022. CC BY 4.0

Focus on technological innovation and participation

- *The project aims to test how the latest technological innovations to manage digital cultural heritage can support and enhance Citizen Science participation, both from a pedagogical and heritage perspective.*
- *Tool development*



- *CrowdHeritage*
- *QANDR*
- *Europeana Gallery/Collection*

The screenshot shows a web browser at the URL crowdheritage.eu/en/hungarian-history. The page features the CrowdHeritage logo and navigation links for HOME, PARTNERS, and ABOUT. A user profile for Frederik Truyen is visible in the top right. The main content area is titled 'CAMPAIGN Facts & fiction: Hungary in black-and-white photographs' and includes a progress indicator showing 0%. A central message reads: 'Hello Frederik! Start contributing to earn your first badge. Contribute more and unlock new badges. You can find the general statistics regarding the campaign below.' Below this message are three badge icons: Silver, Gold, and Bronze. A goal section provides the following details:

START DATE	END DATE
14/10/2021	23/10/2021
CONTRIBUTORS	PROGRESS
0	0% 0/5000

 The page also includes a 'GOAL' section with a description of the campaign's purpose and a footer with logos for CitizenHeritage and Erasmus+.

Citizen Science in practice: guidelines for CSR initiatives in the Cultural Heritage sector

Roberta Pireddu & Fred Truyen (KU Leuven)
Multiplier Event NTUA - 29 May 2023

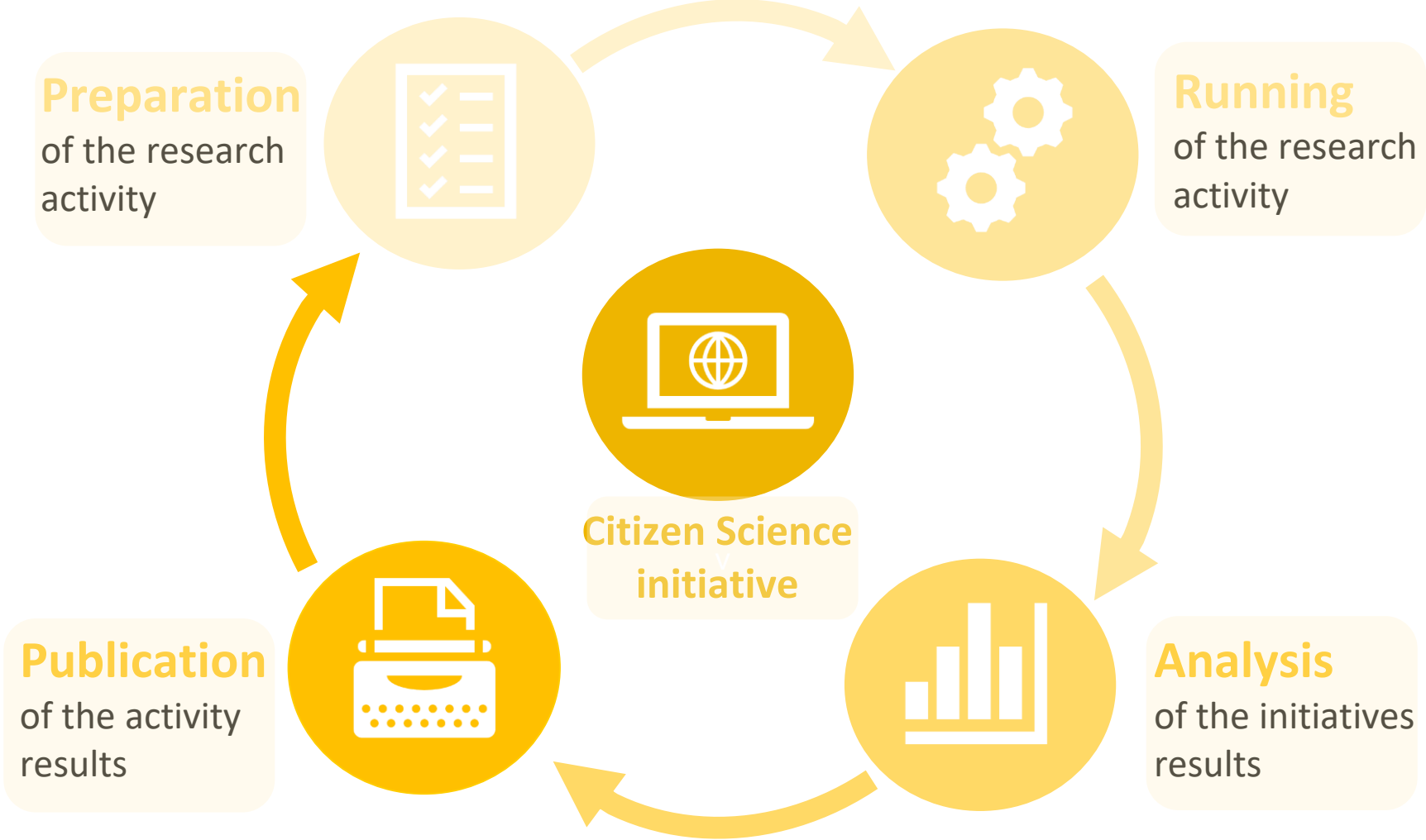
Enhancing citizen's participation in cultural heritage?

- Crowdsourcing & CS activities as institutional priorities in cultural heritage (and not anymore as *experimental* activities)
- Increasing public's participation and engagement with digital collection
- Cooperation with CHIs → closer attention to participant's experience & recognition of contribution's value is needed
- Focus on public engagement participation rather than merely on production

Citizen Science Methodology for CHIs: the CitizenHeritage approach

- ✓ *Development of **user requirements & guidelines** for CHIs involved in Citizen Science initiatives.*
- ✓ *Development of a **model** for Citizen Science activities creation and implementation*
- ✓ *Provide CHIs with valuable feedback on how to **assess and enhance** their citizen science initiative: the Self-Assessment checklist*

A cyclic model for developing CS initiatives



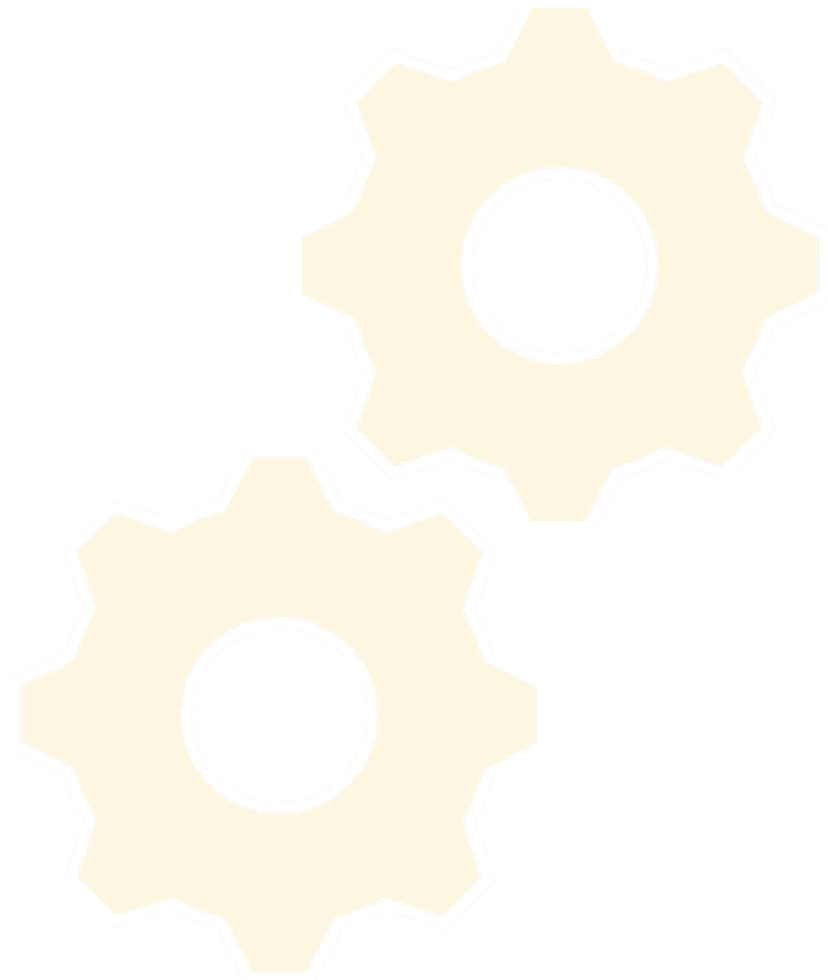
Preparation of the research activity

- **Identification** of the type of initiative *which CS action (interview, metadata collection, material gathering etc..)?*
- **Description** of the expected participants & citizen contributions and **selection** process
- Participants **information** and contributions' **privacy validation** process



Running of the research activity

- Easily accessible **documentation** for the contributors *uses, participants & author status, copyright, privacy regulation*
- Participants **traceability** on project's website
- Research **replicability**
- **Follow-up** actions for the contributors



Analysis & publication of the results

- Publication **traceability**
- Proper research **referencing** in academic papers
- Compliant with **FAIR Open Access** principles
- **Authorship & credits** attributions



A Self-Assessment checklist for CHIs

- Addressed to cultural institutions willing to develop a citizen science action.*
- Aims to provide CHIs with the right tools to self-assess their initiative and understand whether the best approaches and methodologies are being implemented.*
- CHIs receive relevant materials to look up, best practices, and suggested readings.*

A Self-Assessment checklist for CHIs

- Developed on Qualtrics*
- Focus on four stages of the CS initiative (before, during, after, impact evaluation)*
- Stress on copyright/ethical/legal as well as data management challenges, complaints handling*
- Evaluation of the initiative's impact*

A Self-Assessment checklist for CHIs

citizen Heritage

Citizen Science Practices in Cultural
Heritage: towards a Sustainable
Model in Higher Education

Test your Citizen Science readiness through the CitizenHeritage Self-Assessment checklist!

WHAT?

The Self-Assessment checklist developed by the CitizenHeritage project intends to offer cultural institutions that want to carry on (or are already in the process of carrying on) a citizen science initiative with guidelines on how to find their way through the uncertainty of the citizen science realm.

HOW?

Through a set of **focused questions & feedback**, this tool will provide you with the right tools to self-assess your initiative and understand whether the right approaches and methodologies are being implemented. As feedback on your replies, you will receive relevant materials to look up.



Scan the **QR code** or go to
<https://www.citizenheritage.eu/self-assessment-checklist/>



What's next?

- *Self-Assessment checklist dissemination & feedback gathering*
- *Self-Assessment checklist supported by on-paper guidelines*
- *Implementation within methodology workshop & events*

Thanks for your attention!

Citizen Heritage

Citizen Science Practices in Cultural Heritage:
towards a Sustainable Model in Higher Education

www.citizenheritage.eu

Contact us: roberta.pireddu@kuleuven.be