

CATALOGUING LARGE PHOTO COLLECTIONS

Is Artificial Intelligence unbiased?

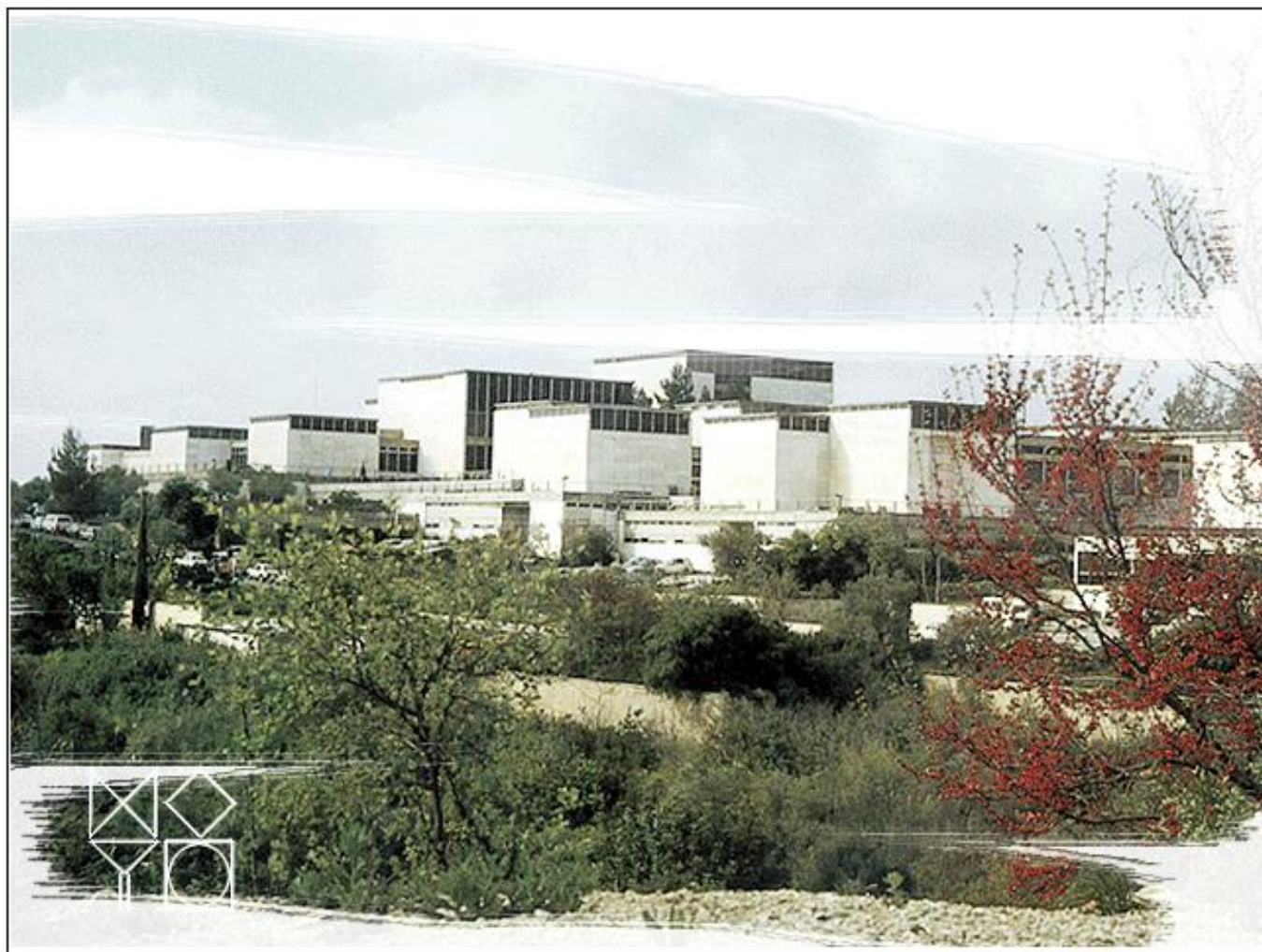


Dr. Allison Kupietzky, The Israel Museum, Jerusalem

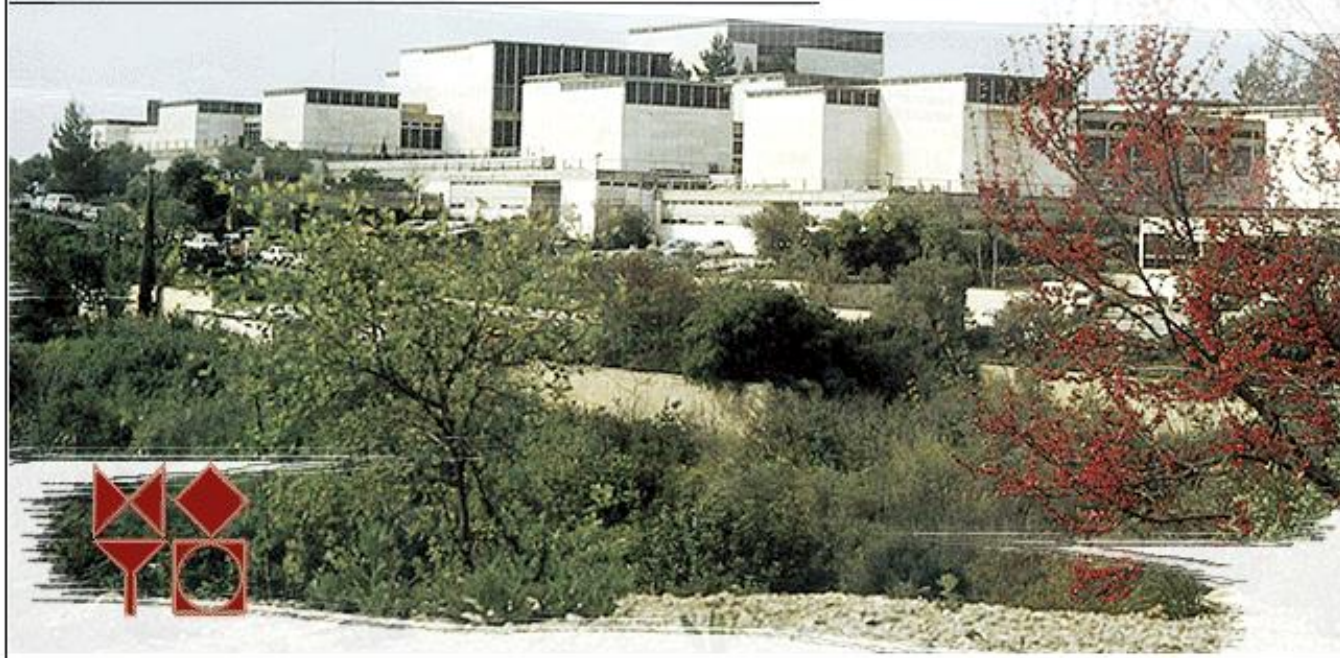
PHOTOCONSORTIUM AND CITIZEN HERITAGE CONFERENCE

The role of photographic heritage in empowering communities' participation in cultural heritage

Pisa, June 2022



מוזיאון ישראל, ירושלים
the israel museum, jerusalem
متحف اسرائيل، اورشليم القدس

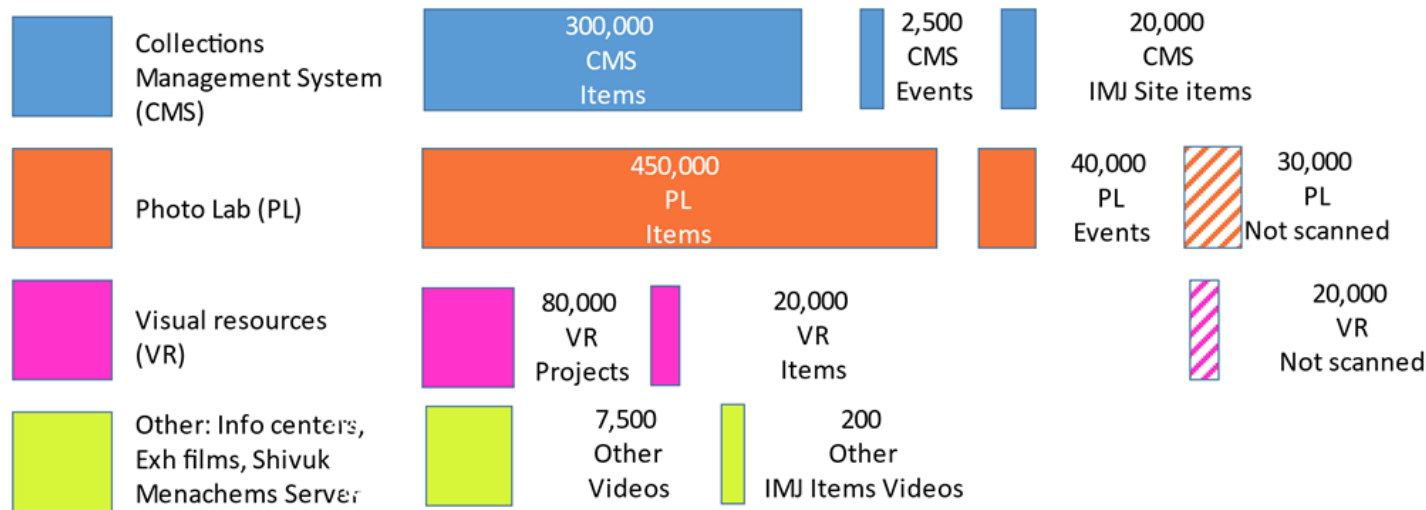


The Israel Museum, Jerusalem Digital Asset Collection

מוזיאון ישראל, ירושלים
the israel museum, jerusalem
متحف إسرائيل، أورشليم القدس



One million media files
(972,200 images and videos)



AI in relation to GLAMs Task Force Report - Europeana Pro



https://pro.europeana.eu/files/Europeana_Professional/Europeana_Network/Europeana_Network_Task_Forces/Final_reports/AI%20in%20relation%20to%20GLAMs%20Task%20Force%20Report.pdf

How can AI be used in museum cataloguing?

- ▷ Visual recognition – Objects, subjects
- ▷ Facial recognition – Artists, Staff, VIP
- ▷ OCR text recognition – Typed archival material
- ▷ HTR (Handwritten text recognition) – Archival letters
- ▷ Number recognition in images – Registration numbers
- ▷ Audio to text – Transcription of videos
- ▷ Search and retrieval – Semantics (Linked Data)

How can AI be used in museum cataloguing?

Some faults include:

- ▷ Gender, racial, and language algorithmic biases...
 - ▷ **Algorithmic biases** can occur due to coding based on assumptions and computer misunderstandings

Because of these issues, human intervention is necessary.

VISUAL RECOGNITION

Objects, Subjects

Identifying information about an exhibition

Finding paintings within an exhibition photo (MoMA example)



<https://www.moma.org/calendar/exhibitions/history/identifying-art>

A project with Google Arts & Culture Lab

Given years of experience and some diligent research, identifying each work of art in an old exhibition photo doesn't sound so hard, does it? Now imagine you have tens of thousands of photos, dating back to 1929. MoMA's Digital Media team and Google Arts & Culture Lab set out to face this daunting challenge—or at least get a head start—using machine learning and computer vision technology.

Our collaborators at Google Arts & Culture Lab used an algorithm to comb through over 30,000 exhibition photos, looking for matches with the more than 65,000 works in our online collection. In total, it recognized over 20,000 artworks in these images, and we used those results to create a vast network of new links between our [exhibition history](#) and [online collection](#). These connections bolster an already unparalleled resource for the millions of visitors to [moma.org](#).

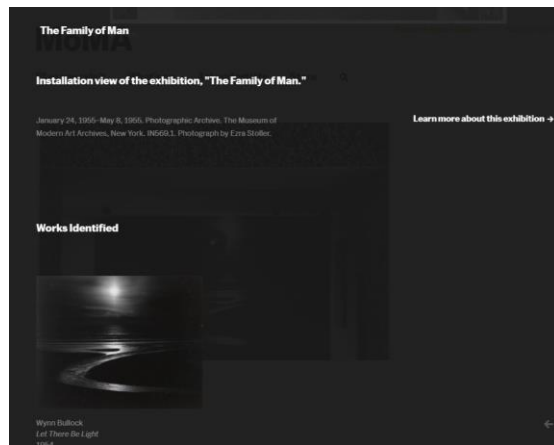
Now a photo from a 1929 painting exhibition opens a window into an iconic work by Paul Cézanne; a 1965 shot of Robert Rauschenberg [prints](#) connects you to [those same works](#) in MoMA's 2017 Rauschenberg retrospective; and one corner of a 2013 design exhibition becomes a portal into poster art across two centuries. While hardly comprehensive, it's a great start—and a remarkable feat given the sheer volume of information involved.

Why weren't there more matches?

While many works were identified, many others don't currently have anything to be matched with. Exhibitions often contain both works from our collection and items loaned from elsewhere, so the installation images likewise contain many works that aren't part of MoMA's collection. In addition, some works that are in the Museum's collection have not yet been added to our constantly evolving online collection, or have been added but don't yet include an image.

From the outset, our main concern was keeping incorrect matches to a minimum. So we sacrificed quantity for quality: Google Arts & Culture Lab designed the algorithm to declare something a match only when it was very "confident." We learned that, like anyone, an algorithm has strengths and weaknesses. At present, the algorithm is very good at identifying static, two-dimensional images. Sculptures; moving image, installation, and sound works; and text-based artworks proved far more challenging. Unsurprisingly, multiples and editions of the same or very similar images also led to some "false positives." Simply put, a machine can't always tell one soup can from another. The algorithm may also incorrectly match photographs when the work on view was actually a different print of the same (or a very similar) image.

Today, the work begun by this machine learning project has been taken up by MoMA staff. Thus far, what we gave up in processing speed has been made up for by the flexibility of human brains and the thoroughness of our curators' research.



Identifying information about an exhibition

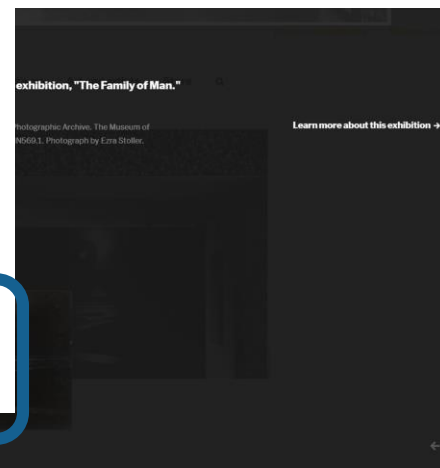
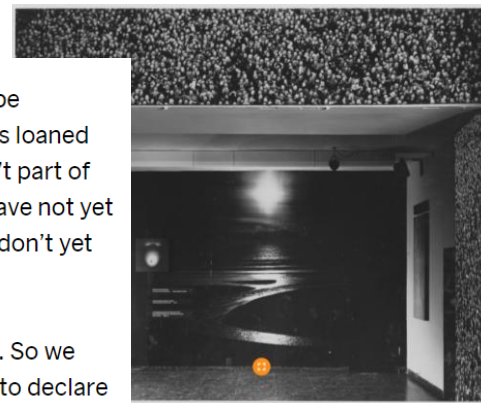
Finding paintings within an exhibition photo (MoMA example)



While many works were identified, many others don't currently have anything to be matched with. Exhibitions often contain both works from our collection and items loaned from elsewhere, so the installation images likewise contain many works that aren't part of MoMA's collection. In addition, some works that are in the Museum's collection have not yet been added to our constantly evolving online collection, or have been added but don't yet include an image.

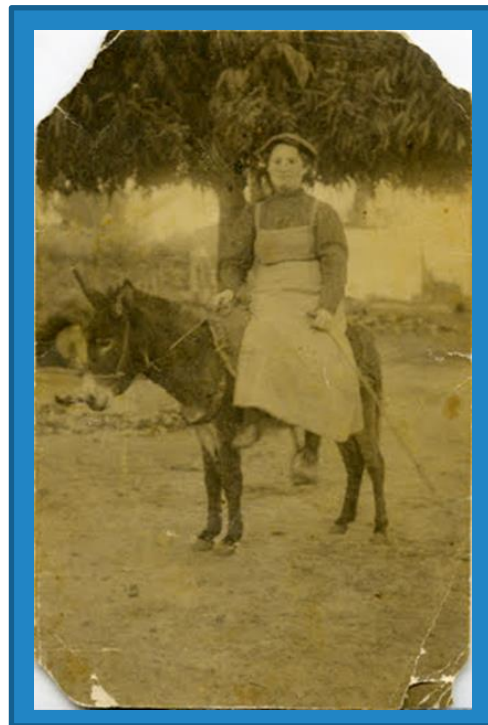
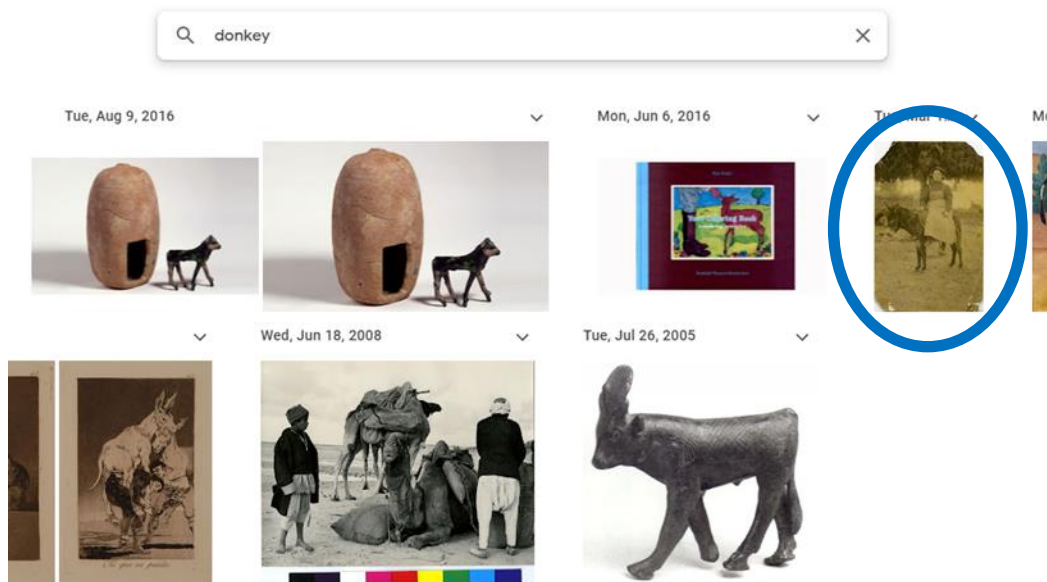
From the outset, our main concern was keeping incorrect matches to a minimum. So we sacrificed quantity for quality: Google Arts & Culture Lab designed the algorithm to declare something a match only when it was very "confident." We learned that, like anyone, an algorithm has strengths and weaknesses. At present, the algorithm is very good at identifying static, two-dimensional images. Sculptures; moving image, installation, and sound works; and text-based artworks proved far more challenging. Unsurprisingly, multiples and editions of the same or very similar images also led to some "false positives." Simply put, a machine can't always tell one soup can from another. The algorithm may also incorrectly match photographs when the work on view was actually a different print of the same (or a very similar) image.

Today, the work begun by this machine learning project has been taken up by MoMA staff. Thus far, what we gave up in processing speed has been made up for by the flexibility of human brains and the thoroughness of our curators' research.



Identifying other items within an image

Searching by identifying traits



Unknown photographer
Chana Orloff, Petah Tikva
1906

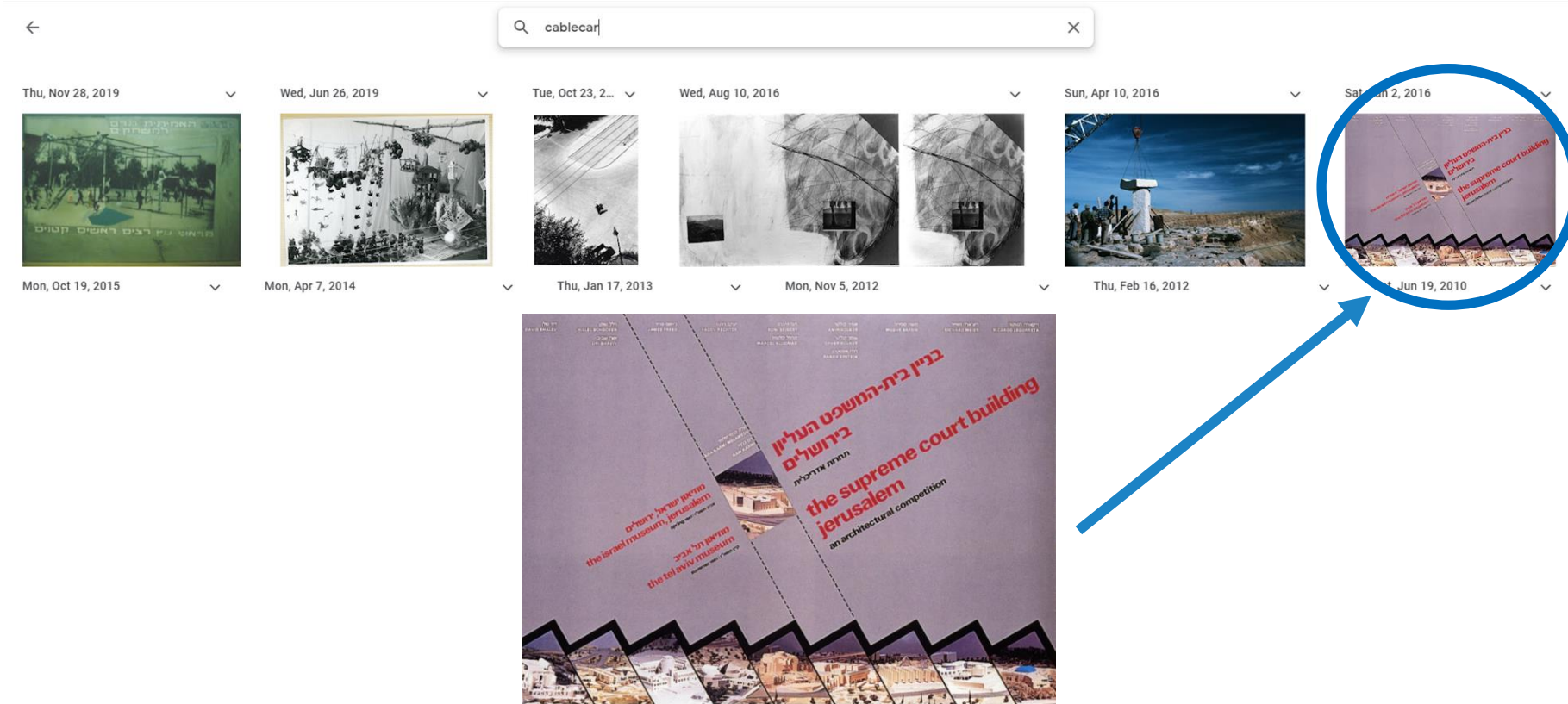
Postcard

Gabriel Talphir Archive, Information Center for Israeli Art, Israel Museum, Jerusalem

Identifying other items within an image

AI's **mistaken** identification of an object in (or the subject of) an artwork

Google images – automated AI keywording: “cable car”



FACIAL RECOGNITION


Artists, Staff, VIPs



Identifying people through legacy data

← → ↻ photos.google.com/search/_cAF1QipOylgG8iouUbdgQNPLRP1loJ-F20J3~ulrc_Friedel%20Stern/photo/AF1QipM7VicReoAv3GhNuvVpdBXDWdX82pG6r2_nU3fl



←



➦ 📏 🔍 ⓘ ☆ 🗑️ ⋮



× Info


Add a description

PEOPLE  


Friedel Stern

DETAILS

 Mar 8, 2021
Mon, 9:44 AM GMT+02:00 

 Friedel_Stern.jpg
2.7MP 1320 × 2070 246 KB

📁 Uploaded from web browser

📍 [Add a location](#) 

A blue arrow points from the 'Friedel Stern' name in the 'PEOPLE' section to the 'Friedel_Stern.jpg' file name in the 'DETAILS' section.

Photos

Explore

Sharing

LIBRARY

Favorites

Albums

- Eldad
- Arturo Schwartz
- DAM pilot
- Bezalel
- Isidor Aschheim

View all albums

Utilities

Archive

Trash

Storage

7.3 GB of 15 GB used

People & Pets

Improve your people groups

1 of 25



Same or different person?



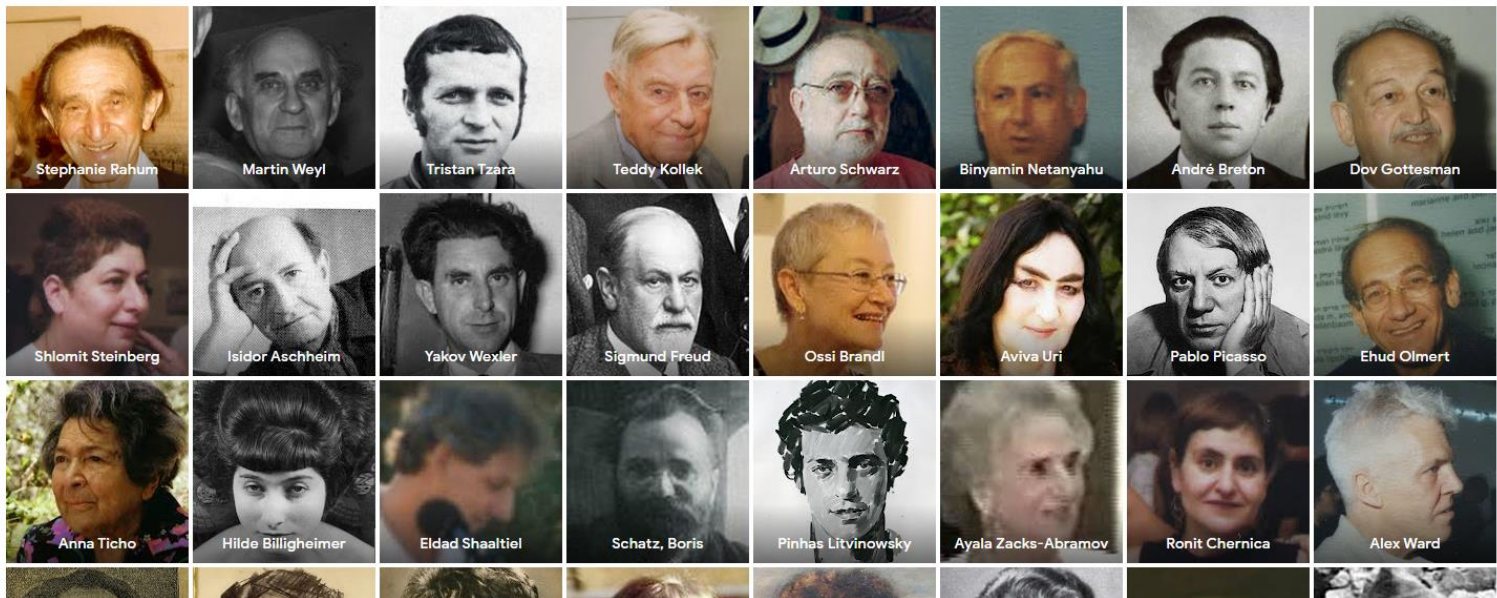
Same



Different



Not sure





Search your photos



Add a name

Find them fast by name with search

Share as album

Tue, Jul 2, 2019



Mon, Oct 19, 2015



Thu, Sep 13, 2012



Thu, Jun 4, 2015



Thu, Aug 23, 2012



Thu, Mar 22, 2012



Sun, May 7, 20...



Thu, Jul 10, 2014



Tue, Nov 29, 2016



Sun, May 11, 2014



Thu, Sep 15, 20...



Sun, Apr 6, 2014



Sun, Dec 6, 2015



Ehud Olmert

Landscape of the Bible – Sacred Scenes in European Master Paintings, Israel Museum, Jerusalem, 05/09/2000 – 30/001/2001



Q Ehud Olmert



Ehud Olmert

Share as album

Mon, Jul 27, 2015



Thu, Jul 23, 2015



Sun, Jun 14, 2015



André Breton

Identifying artists



Image search in IMJ's collection

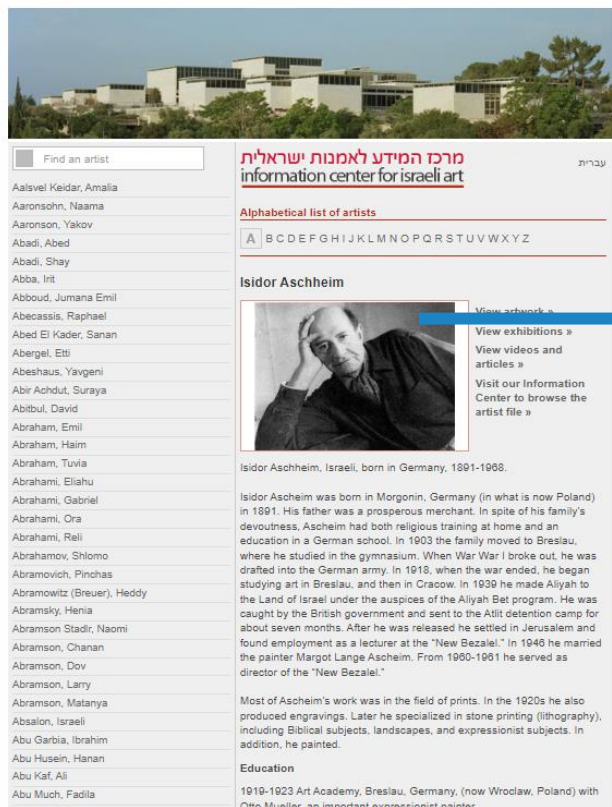
Searching Isidor Ascheim's profile picture to find other images featuring his face



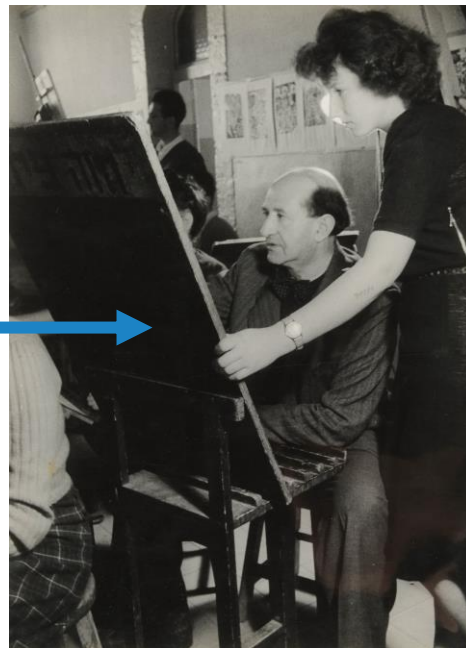
Isidor Ascheim
Portraitphotographie von Alfred Bernheim, Jerusalem

Image search in IMJ's collection

Searching Isidor Ascheim's profile picture to find other images featuring his face



The screenshot shows the IMJ website interface. At the top is a banner image of a modern building. Below it is a search bar with the text "Find an artist". To the right of the search bar is the text "מרכז המידע לאמנות ישראלית" and "information center for israeli art". Below the search bar is a list of artists, including Aalsivel Keidar, Amalia, Aaronsohn, Naama, Aaronson, Yakov, Abadi, Abed, Abadi, Shay, Abba, Irit, Abboud, Jumana Emil, Abecassis, Raphael, Abed El Kader, Sanan, Abergel, Etti, Abeshaus, Yavgeni, Abir Achdut, Suraya, Abitbul, David, Abraham, Emil, Abraham, Haim, Abraham, Tuvia, Abrahami, Eliahu, Abrahami, Gabriel, Abrahami, Ora, Abrahami, Reil, Abrahamov, Shlomo, Abramovich, Pinchas, Abramowitz (Breuer), Heddy, Abramsky, Henia, Abramson Stadler, Naomi, Abramson, Chanan, Abramson, Dov, Abramson, Larry, Abramson, Matanya, Absalon, Israeli, Abu Garbia, Ibrahim, Abu Hussein, Hanan, Abu Kaf, Ali, and Abu Much, Fadila. To the right of the list is a section titled "Alphabetical list of artists" with a search bar containing the letter "A" and a list of letters from B to Z. Below this is a section titled "Isidor Ascheim" with a profile picture of Isidor Ascheim. To the right of the profile picture is a list of links: "View artwork", "View exhibitions", "View videos and articles", and "Visit our Information Center to browse the artist file".



Alfred Bernheim, Israeli, 1885-1974
Isidor Ascheim in classroom, Bezalel, Jerusalem
After 1945
Gift of Warner Communications Inc., New York
B99.0921 (pBez040)

Facial recognition in IMJ's collection

Identifying Avigdor Arikha's face across collections

Thu, Nov 10, 2016



Sun, Jul 26, 2015



Mon, Jan 16, 2012



Avigdor Arikha, Israeli, 1929-2010
Canvas with Self Portrait
1976
Oil on canvas
Purchase, Ayala Zacks-Abramov Fund
B77.0620
Israeli Art Department

"Avigdor Arikha" exhibition opening, 1998
IMJ Photography Laboratory

Avigdor Arikha
Photographer: Stanley I. Batkin
From the Archives of the
Information Center for Israeli Art

Using facial recognition to identify photos featuring museum staff

Eldad



Can AI match faces – is it the same person

Every Pixel API

EVERYPIXEL API

products demo pricing documentation use cases contacts

Image Keywording Video Keywording Stock Photo Scoring UGC Photo Scoring **Age recognition**

We found 1 person at the picture

| | |
|----------|----|
| Person 1 | 53 |
|----------|----|

Start using this API →

TRY OUR SAMPLES

EVERYPIXEL API

products demo pricing documentation use cases contacts

Image Keywording Video Keywording Stock Photo Scoring UGC Photo Scoring **Age recognition**

We found 1 person at the picture

| | |
|----------|----|
| Person 1 | 45 |
|----------|----|

Start using this API →

TRY OUR SAMPLES

Animating with facial recognition

MyHeritage -- Richard Kauffmann (1887–1958) German / Israeli architect

מחקר

דנ"א

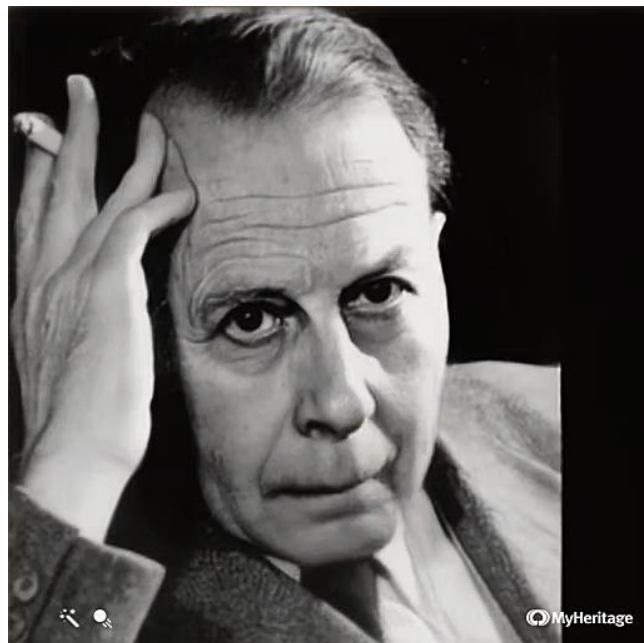
תמונות

תגליות

אילן יוחסין

דף הבית

 MyHeritage



התמונה המונפשת שלך מוכנה!

מדהים, לא? הנפש תמונות ושתף אותן
עם המשפחה והחברים שלך.

העלה תמונה נוספת

הורד את הסרטון

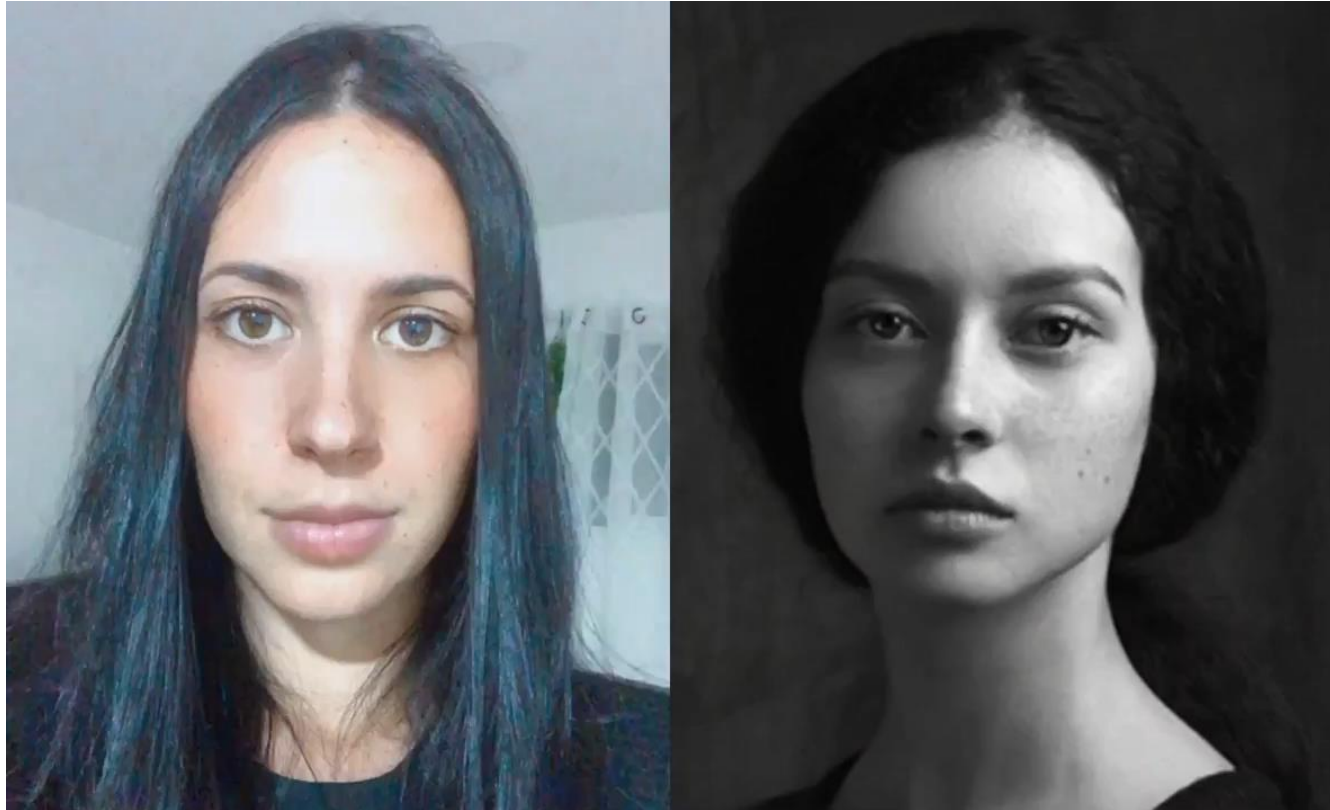
לתמונות שלי

שתף את הסרטון עכשיו



Animation and facial recognition

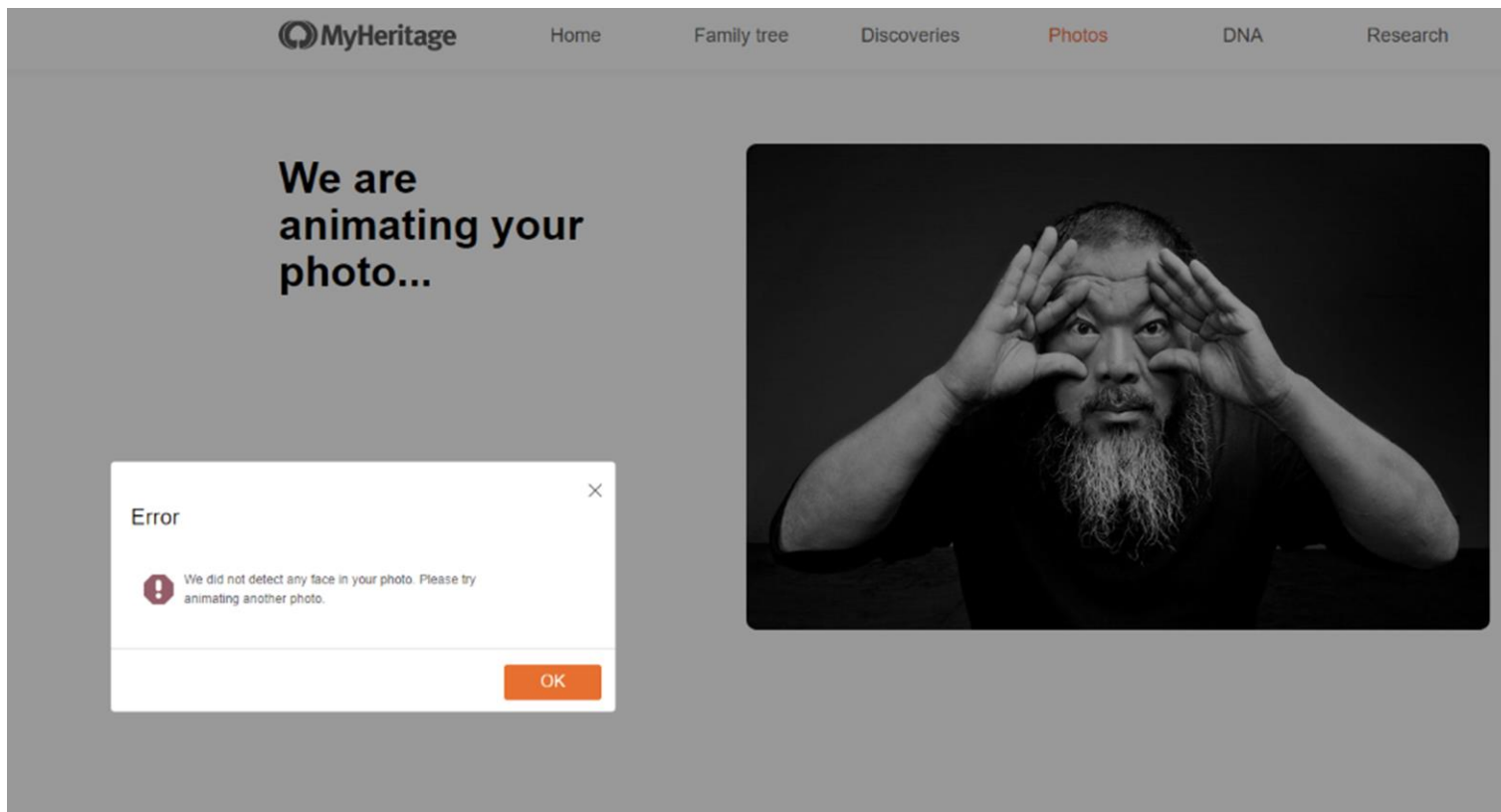
Tool: MyHeritage – Deep Nostalgia [D-ID]



Biases in facial recognition

Tool: MyHeritage

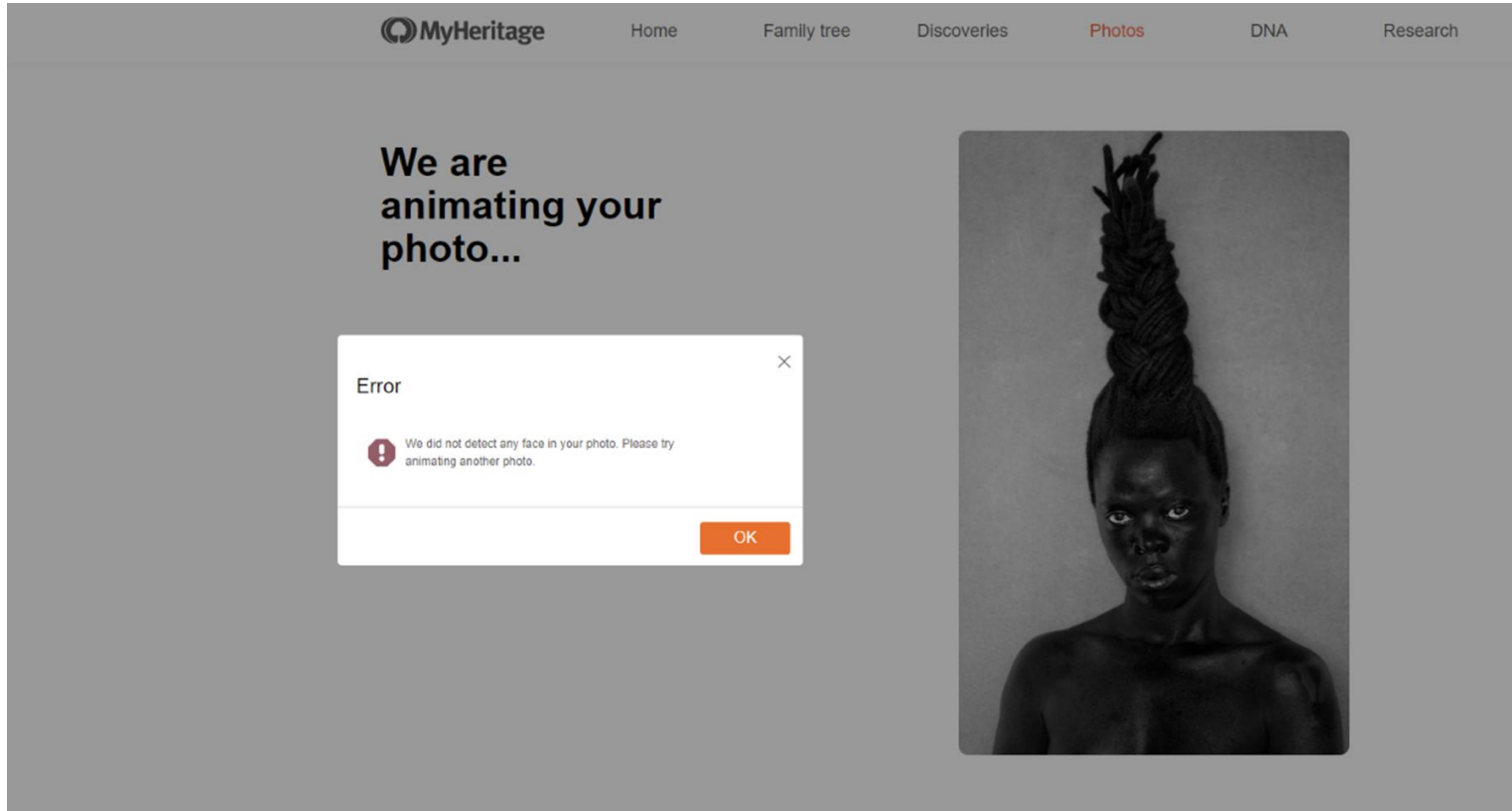
Ai Weiwei, Chinese artist and activist



Biases in facial recognition

Tool: MyHeritage

Zanele Muholi's self-portrait



Tool: MyHeritage

Portrait of Jacob Lawrence LCCN2004663191.jpg

Your animated photo is ready!

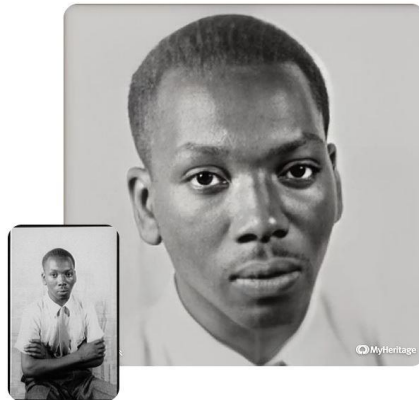
Pretty incredible, isn't it? Animate photos and share them with your family and friends.

[Upload another photo](#)

[Download video](#)

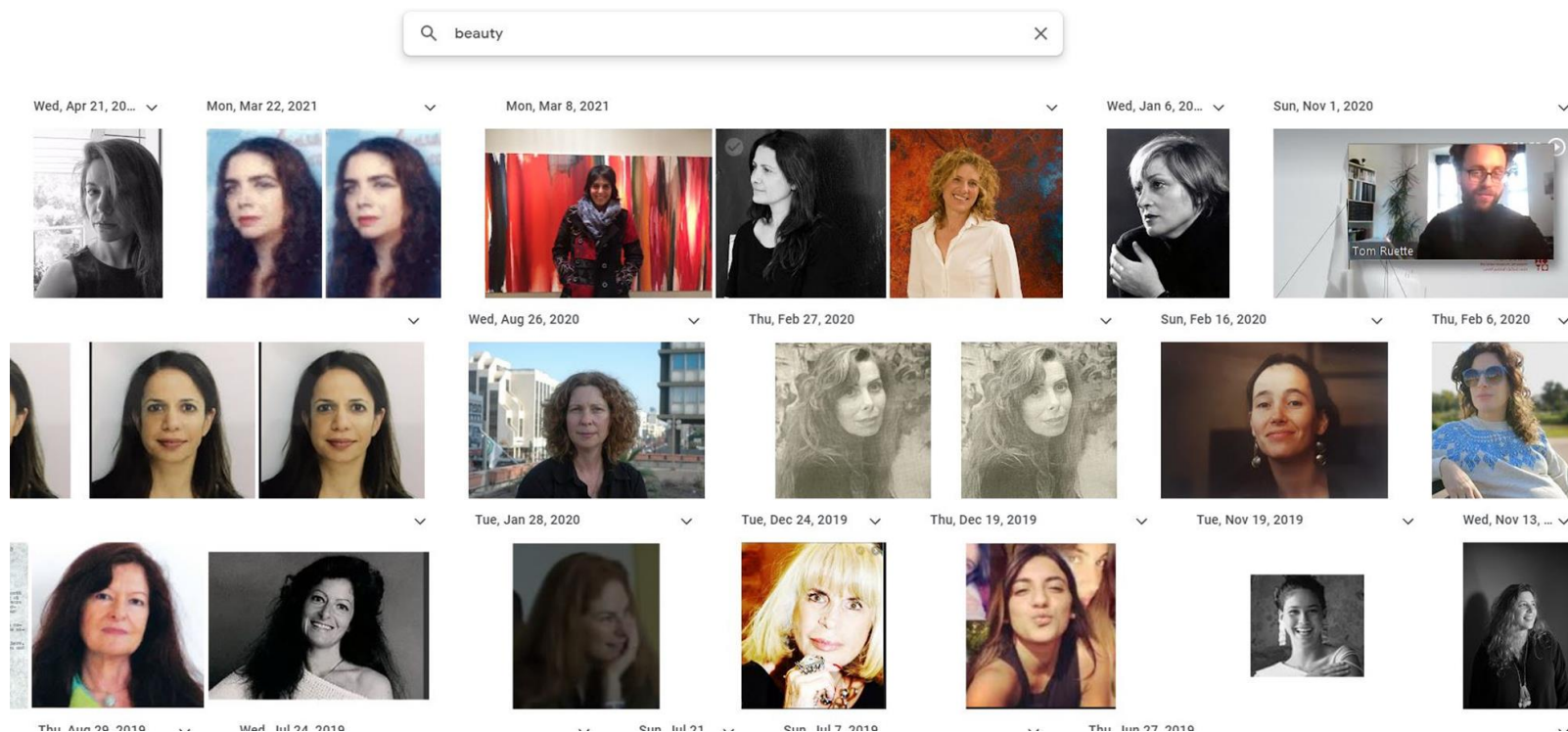
[Go to my photos](#)

SHARE VIDEO NOW



Biases in facial recognition

Bias towards Caucasians and women when searching “beauty”



Biases in facial recognition

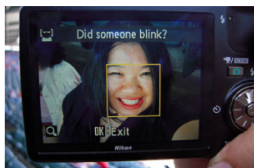
TIME

Are Face-Detection Cameras Racist?

By Adam Rose | Friday, Jan. 22, 2010

Like 134 Tweet Share Read Later

When Joz Wang and her brother bought their mom a Nikon Coolpix S630 digital camera for Mother's Day last year, they discovered what seemed to be a malfunction. Every time they took a portrait of each other smiling, a message flashed across the screen asking, "Did someone blink?" No one had. "I thought the camera was broken!" Wang, 33, recalls. But when her brother posed with his eyes open so wide that he looked "bug-eyed," the messages stopped.



Joz Wang

Wang, a Taiwanese-American strategy consultant who goes by the Web handle "jozjoz," thought it was funny that the camera had difficulties figuring out when her family had their eyes open. So she posted a photo of the blink warning on her blog under the title, "Racist Camera! No, I did not blink... I'm just Asian!" The post was picked up by Gizmodo and Boing Boing, and prompted at least one commenter to note, "You would think that Nikon, being a Japanese company, would have designed this with Asian eyes in mind."

RELATED

The Best Travel Gadgets of 2009

Email Print
+ Share Reprints
Follow @TIME

(See the top 10 gadgets of 2009.)

Nikon isn't the only big brand whose consumer cameras have displayed an occasional — though clearly unintentional — bias toward Caucasian faces. Face detection, one of the latest "intelligent" technologies to trickle down to consumer cameras, is supposed to make photography more convenient. Some cameras with face detection are designed to warn you when someone blinks; others are programmed to automatically take a picture when somebody smiles — a feature that, theoretically, makes the whole problem of timing your shot to catch the brief glimpse of a grin obsolete. Face detection has also found its way into computer webcams, where it can track a



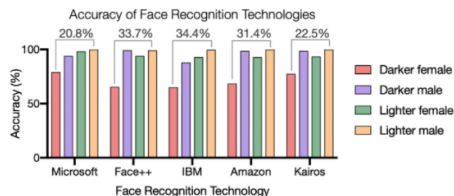
OCTOBER 24, 2020

BLOG: SCIENCE POLICY, SPECIAL EDITION: SCIENCE POLICY AND SOCIAL JUSTICE

Racial Discrimination in Face Recognition Technology

Inequity in face recognition algorithms

Face recognition algorithms boast high classification accuracy (**over 90%**), but these outcomes are not universal. A growing body of **research** exposes **divergent error rates** across demographic groups, with the poorest accuracy **consistently found** in subjects who are **female, Black, and 18-30 years old**. In the landmark 2018 "**Gender Shades**" project, an intersectional approach was applied to appraise three gender classification algorithms, including those developed by IBM and Microsoft. Subjects were grouped into four categories: darker-skinned females, darker-skinned males, lighter-skinned females, and lighter-skinned males. All three algorithms performed the worst on darker-skinned females, with error rates up to 34% higher than for lighter-skinned males (**Figure 1**). **Independent assessment** by the National Institute of Standards and Technology (NIST) has confirmed these studies, finding that face recognition technologies across 189 algorithms are least accurate on women of color.



MIT News
ON CAMPUS AND AROUND THE WORLD

SUBSCRIBE

BROWSE

Study finds gender and skin-type bias in commercial artificial-intelligence systems

Examination of facial-analysis software shows error rate of 0.8 percent for light-skinned men, 34.7 percent for dark-skinned women.

Watch Video

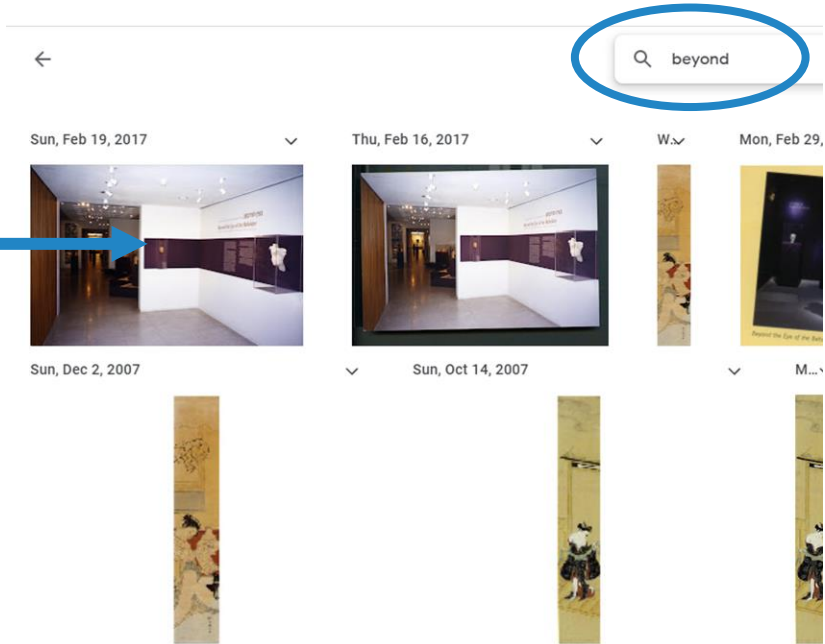
Larry Hardesty | MIT News Office
February 11, 2018



OCR TEXT RECOGNITION

Typed archival material

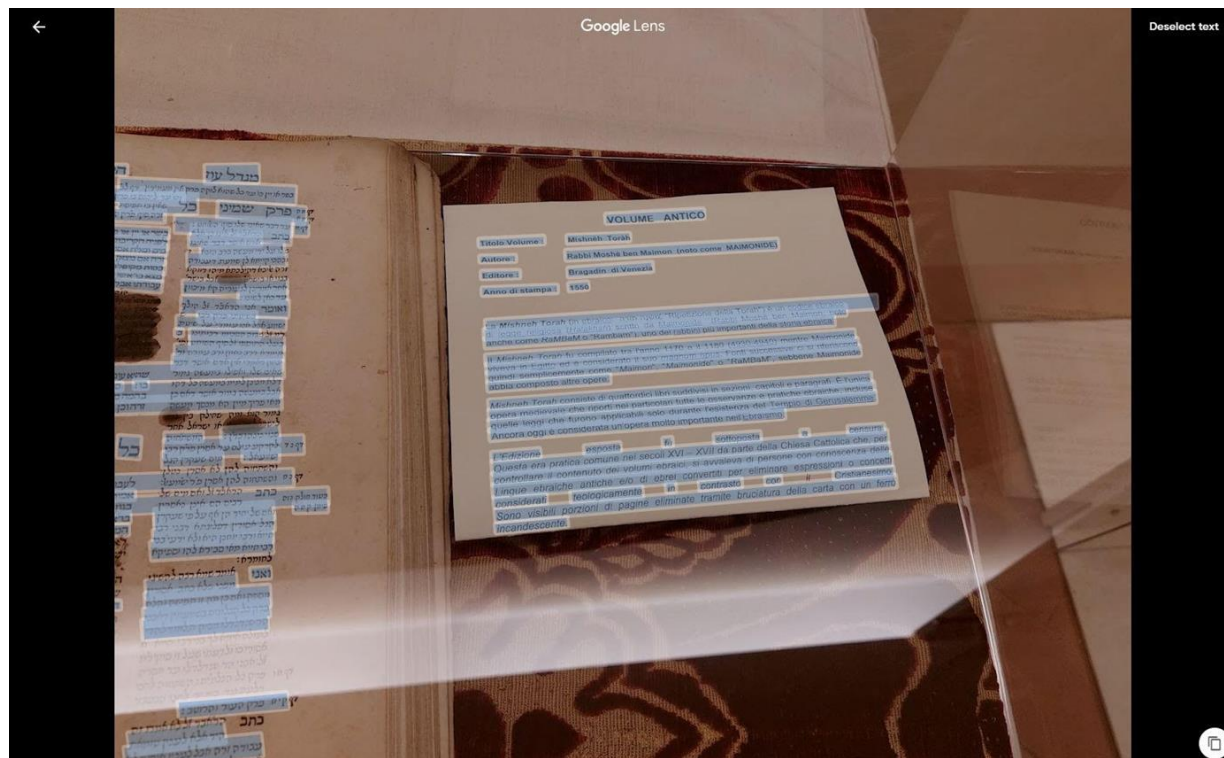
Exhibition documentation



Beyond the Eye of the Beholder: Ideals of Human Beauty in Africa and the Americas,
Israel Museum, Jerusalem, 01/03/2005 - 17/01/2006

Translation of texts

Tool: Google Lens



מִשְׁנֵה תֹרָה לְרַבְּמֹנֶה יוֹסֵף
יְהוֹנָתָן לְחִי לִין לֹס חוֹסֵל לֹס
בְּכִי שֶׁל (לִינִי כְּעֹסֵק מִלֵּךְ שֶׁרָא עֵץ
ק)
לֹס כְּעֹשֶׂת עֵשֶׂר חוֹסֵל לֹס כִּן בְּהֵמָה
חִי פִיךָ מִיִּין קֵץ מִסֵּךְ מַעֲשֵׂה זֶרְחָן
'ebraico codice un e ("Torah della Ripetizione
di ebraico in) Torah Mishneh La religiosa legge
da scritto (Halakhah) Maimonide
noto, Maimon ben Moshè Rabbi) Maimonide
dei uno, ("Rambam" o Rambam come anche
'ebraica storia della importanti più rabbini
=

1170 fanno tra compilato fu Torah Mishneh II
Maimonide mentre (4930-4940) 1180 il e
suo il considerato è ed Egitto in viveva
si ci successive Fonti opus magnum
come semplicemente quindi riferiscono
sebbene, "Rambam" o "Maimonide", "Maimon"
opere altre composto abbia Maimonide
D

libri quattordici di consiste Torah Mishneh
È paragrafi e capitoli, sezioni in suddivisi
nei riporti che medievale opera l'unica
pratiche e osservanze le tutte particolari
furono che leggi quelle incluse, ebraiche
del l'esistenza durante solo applicabili
è oggi Ancora, Gerusalemme di Tempio
importante molto un'opera considerata
nell'Ebraismo

Questa l'Edizione esposta fu con a, censura
da XVII - XVI secoli nel comune pratica era
per, che Cattolica Chiesa della parte
si, ebraici volumi del contenuto il controllare
delle conoscenza con persone di araveva
ebrei di e/o antiche ebraiche Lingue
o espressioni eliminare per convertiti
in contrasto, Cristianesimo concetti
visibili Sono considerati teologicamente
tramite eliminate pagine di porzioni
ferro un con carta della bruciatura
incandescente
ק מחזק
ל
sottoposta
אמור
סִימָן קמק
נחירי רביב רצון

OCR – books, journals, pamphlets

Tools: PDF, OCR

ARTISTIQUES & SCIENTIFIQUES

HEBDOMADAIRE D'INFORMATION, DE CRITIQUE ET DE BIBLIOGRAPHIE
Le plus fort tirage des périodiques littéraires

Directeurs Fondateurs : JACQUES GUENNE et MAURICE MARTIN DU GARD
Rédacteur en Chef : Frédéric LEFEVRE

COLLABORATION RÉGULIÈRE

GABRIELLE D'ANNUNZIO, RENÉ BOYLESVE, de l'Académie Française, GÉRARD BAUEH, HENRI BREMOND, de l'Académie Française, JACQUES et MARCEL BOULENGER, PAUL BOURGET, de l'Académie Française, ANDRÉ BRETON, FRANCIS CARCO, JEAN COCTEAU, MARCEL COULON, RENÉ CREVEL, FERNAND OIVOIRE, ANDRÉ DOERET, ROLAND DORGELES, DRIEU LA ROTHILLE, HENRI DUVERNOIS, CLAUDE FARRERE, LUCIEN FABRE, BERNARD FAY, PAUL FIERENS, ANDRÉ GIDE, GEORGES GRAPPE, D^r GUTMANN, EMILE HENRIOT, CAMILLE JULIAN, de l'Académie Française, JACQUES DE LACRETELLE, PIERRE LASSERRE, ANDRÉ LEBEY, PAUL LOMBARD, EUGÈNE MARSAN, HENRI MASSIS, FRANÇOIS MAURIAC, CHARLES MAURRAS, PIERRE MILLE, P. DE NOLHAC, de l'Académie Française, HENRY DE MONTHERLANT, PAUL MORAND, C^{mt} DE NOAILLES, ANDRÉ ROUYEYRE, PAUL SOUDAY, ANDRÉ SPIRE, FORTUNAT STROWSKI, FRANÇOIS DE TESSAN, LOUIS THOMAS, ROBERT DZ TRAZ, LÉON TREICH, PAUL VALÉRY, VALÉRY LARBAUD, FERNAND VANDEREM, JEAN-LOUIS VAUDOYER, D^r VOIVENEL, BERNARD ZIMMER, etc...

Dans chaque numéro : UNE NOUVELLE INÉDITE

Les Opinions et Portraits, de MAURICE MARTIN DU GARD. — Les Portraits d'Artistes, de JACQUES GUENNE. — Une heure avec..., par FRÉDÉRIC LEFEVRE. — L'Esprit des Livres, par EDMOND JALOUX. — Les Lettres françaises, par BENJAMIN CREMIEUX. — Le Livre catholique, par L. MARTIN-CHAUFFIER. — Le Livre protestant, par RENÉ GILLOUIN. — Les Chroniques, de MAURICE BOISSARD. — L'Editorial, de J.-J. BHOUSSON. — En toute liberté, par J. ERNEST-CHARLES. — Le Théâtre, par CLAUDE BERTON. — La Chronique artistique, de FELS. — La Musique, par GEORGES AURIC, ANDRÉ CÉROUY. — Le Musichall, par ROGER ALLARD.

HUIT PAGES illustrées, du format des grands quotidiens

LA MATIÈRE D'UN LIVRE : huit sous

ABONNEMENT UN AN : FRANCE, 20 FRANCS. — ÉTRANGER, 35 FRANCS

On s'abonne chez tous les Libraires et à la LIBRAIRIE LAROUSSE,

13-17, rue Montparnasse, PARIS (6^e)

Chèque postal : 154-81, PARIS

DIRECTION ET RÉDACTION : 6, RUE DE MILAN, PARIS (9^e). TÉLÉPHONE : CENTRAL 32-65 -97-16

ARTISTIQUES & SCIENTIFIQUES

HEBDOMADAIRE D'INFORMATION, DE CRITIQUE ET DE BIBLIOGRAPHIE

Le plus fort tirage des périodiques littéraires

Directeurs Fondateurs : JACQUES GUENNE et MAURICE MARTIN DU GARD

Rédacteur en Chef : Frédéric LEFEVRE

COLLABORATION RÉGULIÈRE

GABRIELLE D'ANNUNZIO, RENÉ BOYLESVE, de l'Académie Française, GÉRARD BAUEH, HENRI BREMOND, de l'Académie Française, JACQUES et MARCEL BOULENGER, PAUL BOURGET, de l'Académie Française, ANDRÉ BRETON, FRANCIS CARCO, JEAN COCTEAU, MARCEL COULON, RENÉ CREVEL, FERNAND OIVOIRE, ANDRÉ DOERET, ROLAND DORGELES, DRIEU LA ROCHELLE, HENRI DUVERNOIS, CLAUDE FARRERE, LUCIEN FABRE, BERNARD FAY, PAUL FIERENS, ANDRÉ GIDE, GEORGES GRAPPE, D^r GUTMANN, EMILE HENRIOT, CAMILLE JULIAN, de l'Académie Française, JACQUES DE LACRETELLE, PIERRE LASSERRE, ANDRÉ LEBEY, PAUL LOMBARD, EUGÈNE MARSAN, HENRI MASSIS, FRANÇOIS MAURIAC, CHARLES MAURRAS, PIERRE MILLE, P. DE NOLHAC, de l'Académie Française, HENRY DE MONTHERLANT, PAUL MORAND, C^{mt} DE NOAILLES, ANDRÉ ROUYEYRE, PAUL SOUDAY, ANDRÉ SPIRE, FORTUNAT STROWSKI, FRANÇOIS DE TESSAN, LOUIS THOMAS, ROBERT DZ TRAZ, LÉON TREICH, PAUL VALÉRY, VALÉRY LARBAUD, FERNAND VANDEREM, JEAN-LOUIS VAUDOYER, D^r VOIVENEL, BERNARD ZIMMER, etc...

Dans chaque numéro : UNE NOUVELLE INÉDITE

Les Opinions et Portraits, de MAURICE MARTIN DU GARD. — Les Portraits d'Artistes, de JACQUES GUENNE. — Une heure avec..., par FRÉDÉRIC LEFEVRE. — L'Esprit des Livres, par EDMOND JALOUX. — Les Lettres françaises, par BENJAMIN CREMIEUX. — Le Livre catholique, par L. MARTIN-CHAUFFIER. — Le Livre protestant, par RENÉ GILLOUIN. — Les Chroniques, de MAURICE BOISSARD. — L'Editorial, de J.-J. BHOUSSON. — En toute liberté, par J. ERNEST-CHARLES. — Le Théâtre, par CLAUDE BERTON. — La Chronique artistique, de FELS. — La Musique, par GEORGES AURIC, ANDRÉ CÉROUY. — Le Musichall, par ROGER ALLARD.

HUIT PAGES illustrées, du format des grands quotidiens

LA MATIÈRE D'UN LIVRE : huit sous

ABONNEMENT UN AN : FRANCE, 20 FRANCS. — ÉTRANGER, 35 FRANCS

On s'abonne chez tous les Libraires et à la LIBRAIRIE LAROUSSE,

13-17, rue Montparnasse, PARIS (6^e)

Chèque postal : 153-83, PARIS

DIRECTION ET RÉDACTION : 6, RUE DE MILAN, N. PARIS (9^e). TÉLÉPHONE : CENTRAL 32-65 -97-16

2 fr, 50 VIENT DE PARAÎTRE

Fault: OCR on a calligram by Guillaume Apollinaire



Calligramme de Guillaume Apollinaire (1880-1918)
Salut monde dont je suis la langue éloquente que sa bouche Ô Paris tire
et tirera toujours aux allemands, 1918

Guillaume Apollinaire (1880-1918), Bluepencil.svg, Wikicommons



HANDWRITTEN TEXT RECOGNITION

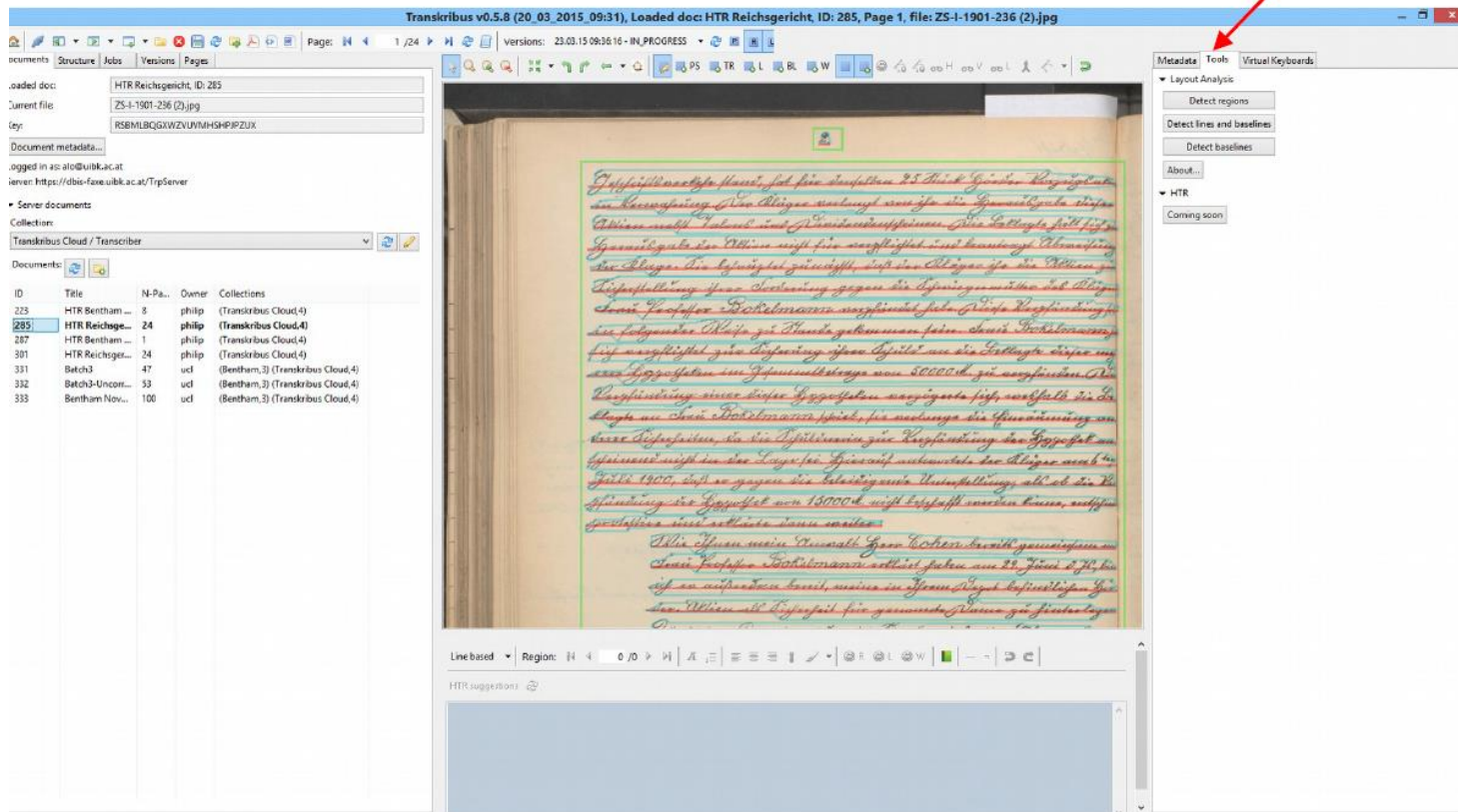
Archival letters



Manuscripts with HTR

Cambridge UK tool: Transkribus – AI transcription tool

Uses training tool – at first manual transcription



The screenshot displays the Transkribus v0.5.8 interface. The main window shows a manuscript page with handwritten text in German. The sidebar on the left contains document metadata and a table of documents. The top right corner features a toolbar with buttons for 'Metadata', 'Tools', and 'Virtual Keyboards'. A red arrow points to the 'Tools' button.

Transkribus v0.5.8 (20_03_2015_09:31), Loaded doc: HTR Reichsgericht, ID: 285, Page 1, file: ZS-1-1901-236 (2).jpg

Documents Structure Jobs Versions Pages

loaded doc: HTR Reichsgericht, ID: 285
current file: ZS-1-1901-236 (2).jpg
key: RSBMLBQGXWZVUMHSHJPZUX
Document metadata...
logged in as: al@uibk.ac.at
server: https://dhis-fare.uibk.ac.at/TspServer

Server documents
Collection:
Transkribus Cloud / Transcriber

Documents

| ID | Title | N-Pa. | Owner | Collections |
|-----|-----------------|-------|--------|-----------------------------------|
| 223 | HTR Bentham | 8 | philip | (Transkribus Cloud,4) |
| 285 | HTR Reichsge... | 24 | philip | (Transkribus Cloud,4) |
| 301 | HTR Reichsge... | 24 | philip | (Transkribus Cloud,4) |
| 331 | Batch3 | 47 | ucf | (Bentham,3) (Transkribus Cloud,4) |
| 332 | Batch3-Uncom... | 53 | ucf | (Bentham,3) (Transkribus Cloud,4) |
| 333 | Bentham Nov... | 100 | ucf | (Bentham,3) (Transkribus Cloud,4) |

Layout Analysis
Detect regions
Detect lines and baselines
Detect baselines
About...

HTR
Coming soon

Line based Region: 1/24 0/0 H A B C D E F G H I J K L M N O P Q R S T U V W X Y Z

HTR suggestions

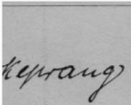
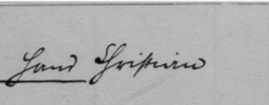
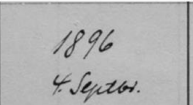
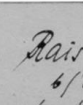

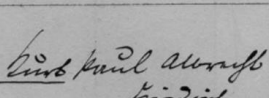
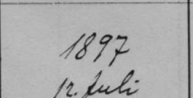
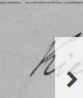

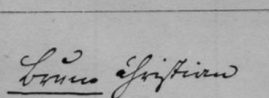
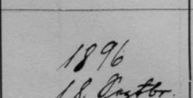
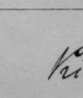
Manuscripts with HTR

Europeana transcribe

PARTICIPATE TRANSCRIBE DISCOVER NEWS

Login

Kieler Gelehrtenschule, Schüleraufnahme 1904-1912 und 1933-1938, item 2

| | | | |
|---|---|---|---|
|  |  |  |  |
|  |  |  |  |
|  |  |  |  |

Enhance your transcribing experience by using full-screen mode

Transcription

Description

Map of Europe showing the location of Kiel, Germany. The map includes labels for various countries and cities, with a red pin marking the location of Kiel, Germany. The map data is from 2018, sourced from Google, ORION-ME, and others.

Story location
Gelehrtenschule, Kiel, Dammstr.1

Login and add location

ID 21534 / 251174

Source <http://europeana1914-1918.eu/...>

Contributor Kieler Gelehrtenschule

Licence <http://creativecommons.org/licenses/by-sa/3.0/>

Europeana transcription tool uses manual transcription and crowd-sourcing in their transcribe website

Trouble reading texts that are
not horizontal or are mixed
with handwriting

525

MoUvEmEnT

DADA

12, rue de Boulainvilliers
Paris 16^e

BERLIN, GENÈVE, MADRID, NEW-YORK, ZÜRICH.

PARIS, 10 mai 1924

CONSULTATIONS : 10 frs

l'adresser au secrétaire
G. RIBEMONT-DESSAIGNES
18, Rue Fourcroy, Paris (17^e)

DADA
DIRECTEUR : TRISTAN TZARA

D'O'H'
DIRECTEUR :
G. RIBEMONT-DESSAIGNES

LITTÉRATURE
DIRECTEURS :
LOUIS ARAGON, ANDRÉ BRETON
PHILIPPE SOUPAULT

M'AMENEZ'Y
DIRECTEUR : CELINE ARNAUD

PROVERBE
DIRECTEUR : PAUL ELUARD

391
DIRECTEUR : FRANÇOIS PICABIA

'Z'
DIRECTEUR : PAUL DERMÉE

Dépositaire
de toutes les Revues Dada
à Paris : Au SANS PAREIL
27, Av. Kléber TEL. PASSY 25 21

Cher ami,
de multiples occupations m'ont empêché
de vous écrire que votre Dada m'a fait
un grand plaisir, ainsi qu'à mes amis
qui lui consacreront un article dans cette
nature. D'ailleurs, ne puis-je pas dire ce
qu'on peut aimer, vos quelques idées sont
tout à fait épatantes. Dites, je vous prie
à Marcel Duchamp que je pense au
silence beaucoup de bien et que je
tâcherai de le lui faire savoir à une
occasion plus palpable et qui ne saura
pas tarder. — Vous êtes très gentil
si vous m'envoyez quelques exemplaires
pour mes amis de Paris et de l'étranger, et
si vous le mettez en vente au Sans
Pareil.

NUMBER RECOGNITION IN IMAGES

Registration numbers

Number Recognition in Images - Registration numbers



Artwork photographed with registration numbers

OCR managed to find numbers

Sometimes...

AUDIO TO TEXT IN VIDEOS

Transcription of videos

PI video transcription

- Transcribes video audio
- Creates links of keywords in Wiki Data
- Suggests relevant materials based on keywords

הגדרות הכרזת העצמאות

אנו חברי מועצת העם נציגי הישוב העברי והתנועה הציונית ביום סיום המנדט הבריטי על ארץ ישראל מתוקף זכותנו הטבעית וההיסטורית

דוד בן גוריון ח' באייר תש"ח 14 May 1948 כוח דייוויד תל אביב

על ארץ ישראל

המנדט הבריטי

והתנועה הציונית

הישוב העברי

חברי מועצת העם

YouTube automated transcription of Hugo Ball, Dada

Has trouble with languages other than English (and with Dada)



Transcript

00:31 of these verses I read out tonight I had
00:36 constructed a special costume for the
00:38 occasion
00:50 you
02:19 humph
02:21 Oh
02:55 well that was a really interesting piece

English (auto-generated)

<https://www.youtube.com/watch?v=PWKp5OAsYZk>

SEARCH & RETRIEVAL

Semantics (Linked Data)

Searching in Hebrew (testing with foreign language)

Searching for "Paris" in Hebrew- Various spellings and translations found

Search results for "פריז" (Paris) in Hebrew:

2020

Thu, Jun 20, 2019

Tue, Dec 18, 2018

Sun, Jan 7, 2018

Tue, Nov 1, 2016

Sun, Apr 10, 2016

Sun, Feb 7, 2016

Sun, Feb 22, 2015

Sun, Sep 7, 2014

Wed, Apr 30, ...

Mon, Jun 10, 2013

Thu, Dec 27, 2012

Sun, Jun 10, 2012

Tue, Apr 12, 2011

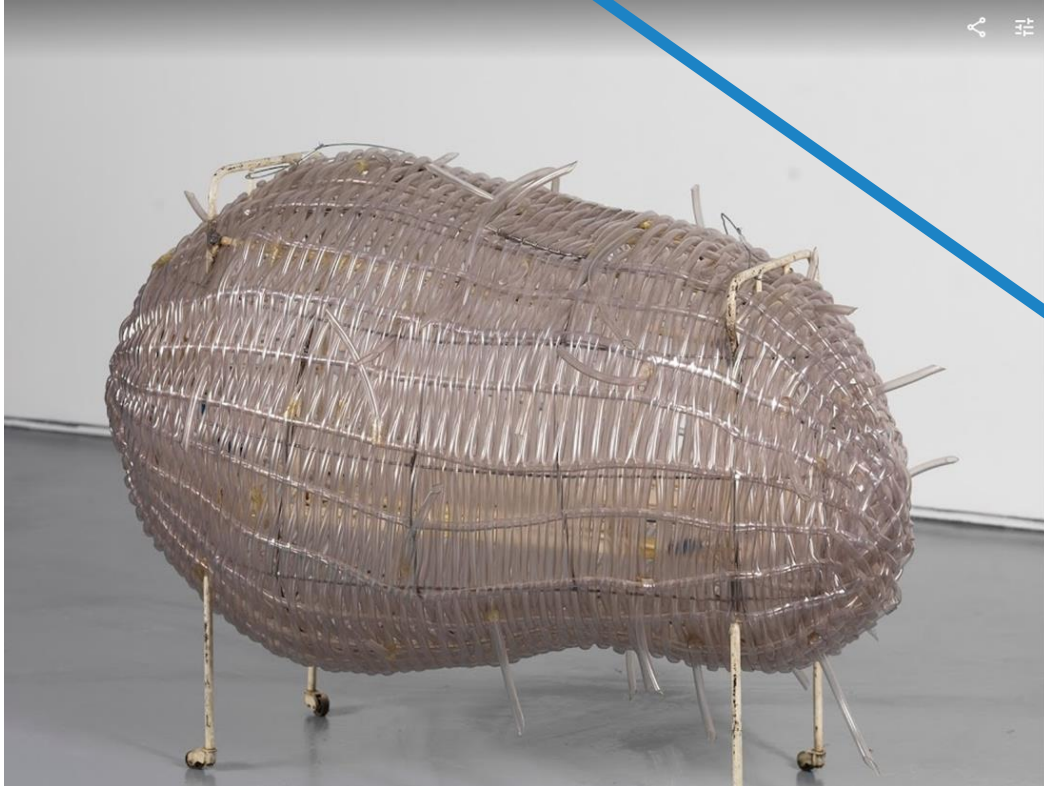
Thu, Jul 22, 2010

Thu, Jun 1, ...

Wed, Nov 25, 2009

Results include various artworks, exhibition posters, and historical documents related to Paris, such as "MANIFESTES", "Paris after abstraction", "Marble Bema Reconstruction", and "PARIS Le Palais du Louvre".

Other info in EXIF data



Info

Add a description

DETAILS

Feb 22, 2015
Sun, 1:55 PM GMT+00:00

B05_0876.jpg
6MP 2633 x 2285 373.7 KB

Hasselblad Hasselblad H3DII-39
f/8 1/125 120mm ISO50

Uploaded from web browser

Other
Chen, Zhen, born China, active Paris, 1955-2000 Zen Garden(Field of Synergy)1998B05.0876

Add a location

Analysis of AI in image cataloguing

STRENGTHS

Allows easy access to images
across extensive collections of
content

Finds connections across database



S

WEAKNESSES

Results are sensitive to lighting and
angles

Pattern of biases relating to age,
gender, race, etc.

W

AI's biases can improve if trained
with a more diverse and inclusive
range of content

OPPORTUNITIES

O

Facial recognition can exclude
relevant content from searches
due to biases

THREATS

T

Conclusions

There is room for improvement:

- ▷ Use of AI should still be taken with a grain of salt
- ▷ Autogenerated tags should be marked as such
- ▷ Faults can be improved with further training
- ▷ Human intervention is still needed

Thank you

Dr. Allison Kupietzky

Collection Database Manager

Head of Information Center for Israeli Art

allison@imj.org.il

